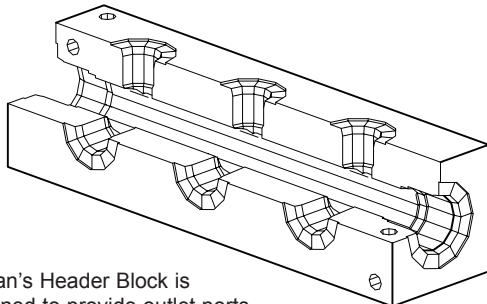
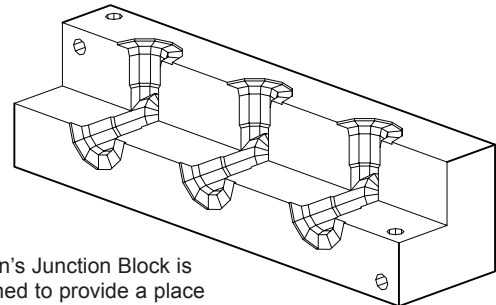


Header Block



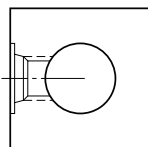
Daman's Header Block is designed to provide outlet ports that are common to one header (thru) port. The header port is always one size larger than the outlet ports.

Junction Block

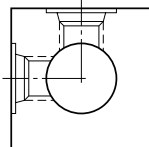


Daman's Junction Block is designed to provide a place to join piping and change direction or split / combine with other lines.

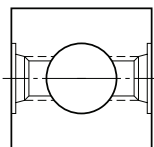
Available Header Block Configurations



0° design
See pages
202-204

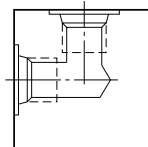


90° design
See pages
206-208

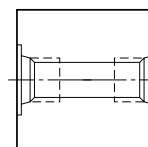


180° design
See pages
210-212

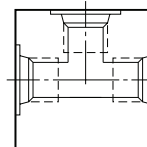
Available Junction Block Configurations



90° design
See pages
214-216



180° design
See pages
218-220



270° design
See pages
222-224

Header Block Mounting Hardware	Port Size	Mounting Bolts**	
	01P	(2) or (3) UNC #10-24 x 1.50 long SHCS	
	01T	M5 x 0.8 x 40mm long SHCS	
	02P	(2) or (3) UNC 0.25-20 x 2.00 long SHCS	
	02[B,T]	M6 x 1.0 x 50mm long SHCS	
	04*	06S	(2) or (3) UNC 0.25-20 x 2.25 long SHCS
		06M	M6 x 1.0 x 60mm long SHCS
	06/08P	(2) or (3) UNC 0.25-20 x 2.50 long SHCS	
	06/08[B,T]	M6 x 1.0 x 65mm long SHCS	
	08S	(2) or (3) UNC 0.25-20 x 2.75 long SHCS	
	08M	M6 x 1.0 x 70mm long SHCS	
	12*	(2) or (3) UNC 0.31-18 x 3.00 long SHCS M8 x 1.25 x 75mm long SHCS	
	16*	(2) or (3) UNC 0.38-16 x 3.50 long SHCS M10 x 1.50 x 90mm long SHCS	
	20*	(2) or (3) UNC 0.50-13 x 4.50 long SHCS M12 x 1.75 x 120mm long SHCS	
24P	(2) or (3) UNC 0.50-13 x 5.00 long SHCS		
24[B,T]	M12 x 1.75 x 130mm long SHCS		
24S	(2) or (3) UNC 0.50-13 x 5.50 long SHCS		
24M	M12 x 1.75 x 140mm long SHCS		

Junction Block Mounting Hardware	Port Size	Mounting Bolts**
	04*	(2) or (3) UNC 0.25-20 x 2.25 long SHCS M6 x 1.0 x 60mm long SHCS
	06*	(2) or (3) UNC 0.25-20 x 2.25 long SHCS M6 x 1.0 x 60mm long SHCS
	08*	(2) or (3) UNC 0.25-20 x 2.50 long SHCS M6 x 1.0 x 65mm long SHCS
	12*	(2) or (3) UNC 0.31-18 x 3.00 long SHCS M8 x 1.25 x 75mm long SHCS
	16*	(2) or (3) UNC 0.38-16 x 3.50 long SHCS M10 x 1.5 x 90mm long SHCS
	20*	(2) or (3) UNC 0.50-13 x 4.50 long SHCS M12 x 1.75 x 120mm long SHCS
	24*	(2) or (3) UNC 0.50-13 x 5.00 long SHCS M12 x 1.75 x 130mm long SHCS

*B,M,T come with metric bolts. P, S come with UNC bolts.

**Mounting bolts not included for stainless steel products.