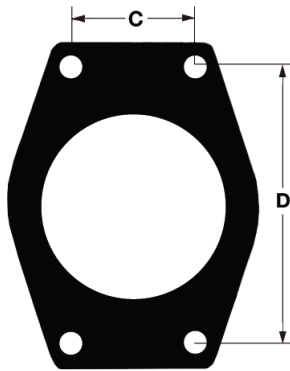


# Technical Information

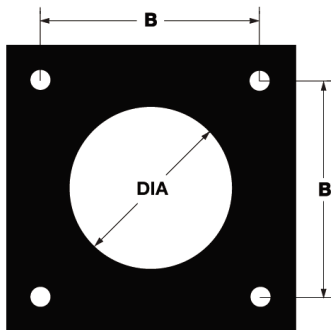
SIZE TABLE					
DASH NUMBER	NOMINAL SIZE	THREAD OR SOCKET SPECIFICATION			
		NPTF	SAE ST. THD.	PIPE SOC.	TUBE SOC.
-04	0.250	0.250-18.0	0.438-20	N/A	N/A
-08	0.500	0.500-14.0	0.750-16	0.855	0.502
-12	0.750	0.750-14.0	1.062-12	1.062	0.752
-16	1.000	1.000-11.5	1.312-12	1.328	1.002
-20	1.250	1.250-11.5	1.625-12	1.672	1.252
-24	1.500	1.500-11.5	1.875-12	1.922	1.502
-32	2.000	2.000-11.5	2.500-12	2.406	2.002
-40	2.500	2.500-8	N/A	2.906	2.502
-48	3.000	3.000-8	N/A	3.547	3.002
-56	3.500	3.500-8	N/A	4.047	3.502
-64	4.000	4.000-8	N/A	4.578	4.002
-80	5.000	N/A	N/A	5.641	5.002

SAE FLANGE PATTERN							
DASH NUMBER	NOMINAL SIZE	CODE 61			CODE 62		
		MTG HOLE CENTERS		THREAD	MTG HOLE CENTERS		THREAD
		DIM C	DIM D		DIM C	DIM D	
-08	0.500	0.688	1.500	0.313-18	0.718	1.594	0.313-18
-12	0.750	0.875	1.875	0.375-16	0.937	2.000	0.375-16
-16	1.000	1.031	2.062	0.375-16	1.093	2.250	0.438-14
-20	1.250	1.188	2.312	0.438-14	1.250	2.625	0.500-13
-24	1.500	1.406	2.750	0.500-13	1.437	3.125	0.625-11
-32	2.000	1.688	3.062	0.500-13	1.750	3.812	0.750-10
-40	2.500	2.000	3.500	0.500-13	2.312*	4.875*	0.875-9*
-48	3.000	2.438	4.188	0.625-11	2.812*	6.000*	1.125-7*
-56	3.500	2.750	4.750	0.625-11	N/A	N/A	N/A
-64	4.000	3.062	5.125	0.625-11	N/A	N/A	N/A
-80	5.000	3.625	6.000	0.625-11	N/A	N/A	N/A

\* These sizes are not covered by nor manufactured to SAE J518 specifications.



SQUARE FLANGE PATTERN							
DASH NUMBER	NOMINAL SIZE	3000 SERIES			6000 SERIES		
		MTG HOLE CENTERS	DIA	THREAD	MTG HOLE CENTERS	DIA	THREAD
-08	0.500	1.438	0.50	0.375-16	1.438	0.50	0.375-16
-12	0.750	1.438	0.75	0.375-16	1.750	0.62-0.75	0.375-16
-16	1.000	2.000	1.00	0.500-13	2.000	0.81-1.00	0.500-13
-20	1.250	2.000	1.25	0.500-13	2.750	1.16-1.25	0.625-11
-24	1.500	2.750	1.50	0.625-11	2.750	1.34-1.50	0.625-11
-32	2.000	2.750	1.94-2.00	0.625-11	3.500	1.69-2.00	0.750-10
-40	2.500	3.750	2.44-2.50	0.875-9	3.750	2.12-2.50	0.875-9
-48	3.000	3.750	2.88-3.00	0.875-9	4.750	2.62-3.00	1.000-8
-56	3.500	4.250	3.38-3.50	0.875-9	5.500	3.00-3.50	1.250-7
-64	4.000	5.000	3.88-4.00	1.000-8	6.000	3.44-4.00	1.250-7
-80	5.000	6.000	4.81-5.00	1.000-8	7.250	4.31-5.00	1.500-6



# Technical Information

## Pressure Ratings of SAE Flanges

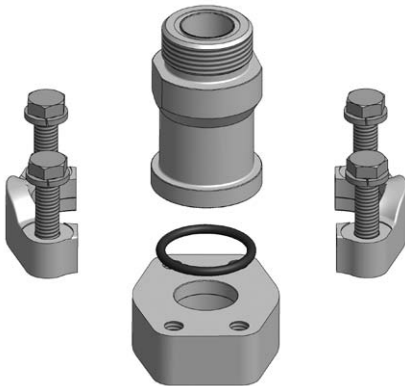
CODE 61 SAE J518-1 / ISO 6162-1					
Dash Size	Inch Size	Max Working Pressure		Fastener Torque Value	
		PSI	MPa	Grade 8 UNC (lb-ft)	Grade 10.9 Metric (N-m)
-8	1/2"	5000	35	24	32
-12	3/4"	5000	35	44	70
-16	1"	4600	32	44	70
-20	1 1/4"	4000	28	68	70
-24	1 1/2"	3000	21	111	130
-32	2"	3000	21	111	130
-40	2 1/2"	2500	17.5	111	130
-48	3"	2300	16	218	295
-56	3 1/2"	500	3.5	218	295
-64	4"	500	3.5	218	295
-80	5"	500	3.5	218	295

CODE 62 SAE J518-2 / ISO 6162-2					
Dash Size	Inch Size	Max Working Pressure		Fastener Torque Value	
		PSI	MPa	Grade 8 UNC (lb-ft)	Grade 10.9 Metric (N-m)
-8	1/2"	6000	40	24	32
-12	3/4"	6000	40	44	70
-16	1"	6000	40	68	130
-20	1 1/4"	6000	40	111	130
-24	1 1/2"	6000	40	218	295
-32	2"	6000	40	332	550

Please note that all pressure ratings in this catalog refer to the flange connection. Adapting the flange to other connections, such as braze tube, welded pipe, or threaded ports / stud ends could reduce maximum working pressure.

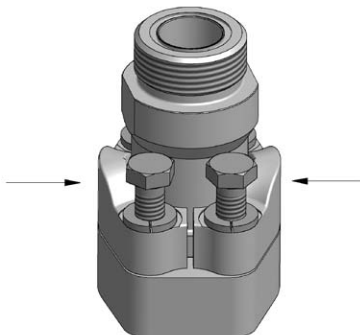
## Split Flange Clamp Assembly

**1** Clean the sealing surfaces and make certain they are free from nicks, scratches and burrs. Foreign material prevents a proper seal.

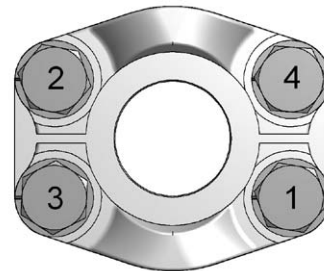


**2** Lubricate the O-ring and ensure that it is properly installed as to prevent damage during installation.

**3** Push the flange clamps towards the flange head and screw fasteners into flange pad. Continue to screw the fasteners until their heads just meet the split flange surface.



**4** Torque the fasteners in diagonal sequence, in small increments, until final torque level is achieved. Torque values for flange connections listed above. Notice that the torque values vary according to size and fastener type.



Daman Products split flange connections are manufactured according to SAE J518-1 and -2, as well as ISO 6162-1 and -2. These standards control dimensions, tolerances and plating. Please note that all pressure ratings in this catalog refer to the flange connection. Adapting the flange to other connections, such as braze tube, welded pipe, or threaded ports / stud ends, could reduce maximum working pressure.

