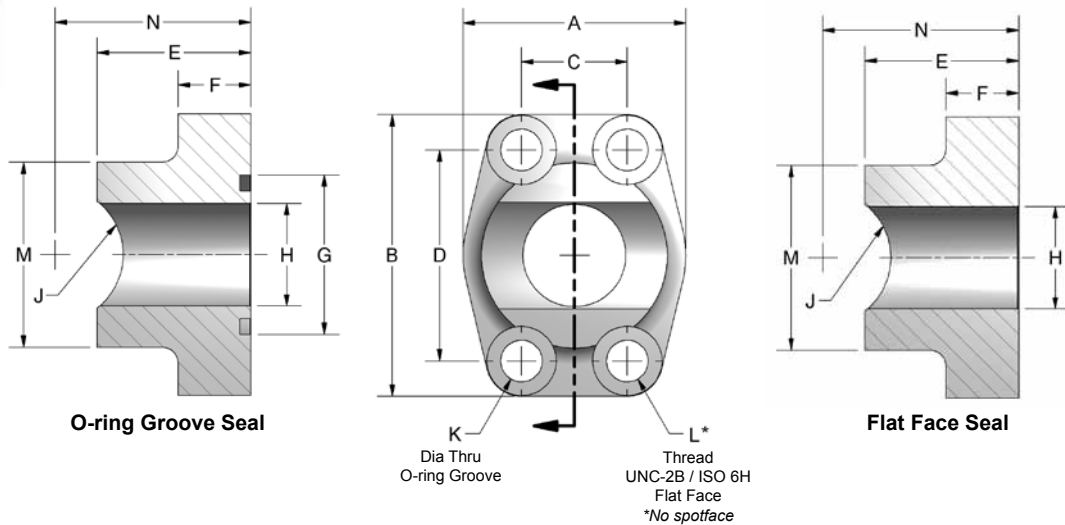
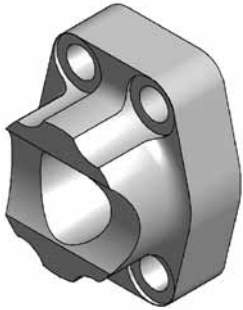


# Saddle Weld Pipe / Tube

Note: Online page updated 3/8/2010



## Ordering Information

FG	Flange Size	Material	Product Type	Seal	Rating Code	Pipe/Tube Size	Weld Type	Mounting																																																																												
	<table border="1"> <thead> <tr> <th colspan="2">Flange Size</th> </tr> <tr> <th colspan="2">Pipe or Tube</th> </tr> </thead> <tbody> <tr> <td>12</td> <td>0.75"</td> </tr> <tr> <td>16</td> <td>1.00"</td> </tr> <tr> <td>20</td> <td>1.25"</td> </tr> <tr> <td>24</td> <td>1.50"</td> </tr> <tr> <td>32</td> <td>2.00"</td> </tr> <tr> <th colspan="2">Pipe Only</th> </tr> <tr> <td>40</td> <td>2.50"</td> </tr> </tbody> </table>	Flange Size		Pipe or Tube		12	0.75"	16	1.00"	20	1.25"	24	1.50"	32	2.00"	Pipe Only		40	2.50"	<table border="1"> <thead> <tr> <th colspan="2">Material</th> </tr> </thead> <tbody> <tr> <td>C</td> <td>Carbon Steel</td> </tr> </tbody> </table>	Material		C	Carbon Steel	<table border="1"> <thead> <tr> <th colspan="2">Product Type</th> </tr> </thead> <tbody> <tr> <td>S</td> <td>Saddle Weld</td> </tr> </tbody> </table>	Product Type		S	Saddle Weld	<table border="1"> <thead> <tr> <th colspan="2">Seal</th> </tr> </thead> <tbody> <tr> <td>G</td> <td>O-ring Groove</td> </tr> <tr> <td>F</td> <td>Flat Face</td> </tr> </tbody> </table>	Seal		G	O-ring Groove	F	Flat Face	<table border="1"> <thead> <tr> <th colspan="2">Rating Code</th> </tr> </thead> <tbody> <tr> <td>1</td> <td>Code 61 • SAE J518 3.5 - 35 MPa • ISO 6162-1</td> </tr> </tbody> </table>	Rating Code		1	Code 61 • SAE J518 3.5 - 35 MPa • ISO 6162-1	<table border="1"> <thead> <tr> <th colspan="2">Pipe/Tube Size</th> </tr> </thead> <tbody> <tr> <td colspan="2">Not all pipe/tube sizes are available for each flange size. See chart next page.</td> </tr> <tr> <td>12</td> <td>0.75"</td> </tr> <tr> <td>16</td> <td>1.00"</td> </tr> <tr> <td>20</td> <td>1.25"</td> </tr> <tr> <td>24</td> <td>1.50"</td> </tr> <tr> <td>30</td> <td>1.75"</td> </tr> <tr> <td>32</td> <td>2.00"</td> </tr> <tr> <td>36</td> <td>2.25"</td> </tr> <tr> <td>40</td> <td>2.50"</td> </tr> </tbody> </table>	Pipe/Tube Size		Not all pipe/tube sizes are available for each flange size. See chart next page.		12	0.75"	16	1.00"	20	1.25"	24	1.50"	30	1.75"	32	2.00"	36	2.25"	40	2.50"	<table border="1"> <thead> <tr> <th colspan="2">Weld Type</th> </tr> </thead> <tbody> <tr> <td>P</td> <td>Pipe Saddle Weld</td> </tr> <tr> <td>E</td> <td>Tube Saddle Weld</td> </tr> </tbody> </table>	Weld Type		P	Pipe Saddle Weld	E	Tube Saddle Weld	<table border="1"> <thead> <tr> <th colspan="2">Mounting</th> </tr> </thead> <tbody> <tr> <th colspan="2">Seal code G only</th> </tr> <tr> <td>U</td> <td>UNC mounting kit</td> </tr> <tr> <td>M</td> <td>Metric mounting kit</td> </tr> <tr> <th colspan="2">Seal code G or F</th> </tr> <tr> <td>X</td> <td>No kit included UNC mounting holes</td> </tr> <tr> <td>Y</td> <td>No kit included Metric mounting holes</td> </tr> </tbody> </table>	Mounting		Seal code G only		U	UNC mounting kit	M	Metric mounting kit	Seal code G or F		X	No kit included UNC mounting holes	Y	No kit included Metric mounting holes
Flange Size																																																																																				
Pipe or Tube																																																																																				
12	0.75"																																																																																			
16	1.00"																																																																																			
20	1.25"																																																																																			
24	1.50"																																																																																			
32	2.00"																																																																																			
Pipe Only																																																																																				
40	2.50"																																																																																			
Material																																																																																				
C	Carbon Steel																																																																																			
Product Type																																																																																				
S	Saddle Weld																																																																																			
Seal																																																																																				
G	O-ring Groove																																																																																			
F	Flat Face																																																																																			
Rating Code																																																																																				
1	Code 61 • SAE J518 3.5 - 35 MPa • ISO 6162-1																																																																																			
Pipe/Tube Size																																																																																				
Not all pipe/tube sizes are available for each flange size. See chart next page.																																																																																				
12	0.75"																																																																																			
16	1.00"																																																																																			
20	1.25"																																																																																			
24	1.50"																																																																																			
30	1.75"																																																																																			
32	2.00"																																																																																			
36	2.25"																																																																																			
40	2.50"																																																																																			
Weld Type																																																																																				
P	Pipe Saddle Weld																																																																																			
E	Tube Saddle Weld																																																																																			
Mounting																																																																																				
Seal code G only																																																																																				
U	UNC mounting kit																																																																																			
M	Metric mounting kit																																																																																			
Seal code G or F																																																																																				
X	No kit included UNC mounting holes																																																																																			
Y	No kit included Metric mounting holes																																																																																			

# Saddle Weld Pipe / Tube

CODE 61 SADDLE WELD - PIPE																			
FLANGE SIZE	PIPE SIZE	A	B	C	D	E	F	G	H	J	K DIA THRU		L THREAD		M	N	MOUNTING HARDWARE SHCS		
											Mounting U or X	Mounting M or Y	UNC-2B U or X	ISO 6H M or Y			O-RING	Mounting U	Mounting M
0.75	0.75	1.97	2.56	.875	1.875	1.42	.71	1.250	.752	.532	.406	10.5mm	0.375-16	M10-1.5	1.54	1.775	214	0.375-16x1.50	M10-1.5x40
1.00	1.00	2.17	2.75	1.031	2.062	1.50	.71	1.560	1.002	.665	.406	10.5mm	0.375-16	M10-1.5	1.81	1.912	219	0.375-16x1.50	M10-1.5x40
1.25	1.25	2.68	3.12	1.188	2.312	1.61	.83	1.750	1.252	.837	.469	10.5mm	0.438-14	M10-1.5	2.22	2.146	222	0.438-14x1.75	M10-1.5x45
1.50	1.50	3.07	3.66	1.406	2.750	1.77	.98	2.115	1.502	.957	.531	12.5mm	0.500-13	M12-1.75	2.50	2.290	225	0.500-13x1.75	M12-1.75x45
2.00	2.00	3.54	4.00	1.688	3.062	1.77	.98	2.490	2.002	1.200	.531	12.5mm	0.500-13	M12-1.75	3.12	2.340	228	0.500-13x1.75	M12-1.75x45
2.50	2.50	4.09	4.49	2.000	3.500	1.97	.98	2.995	2.502	1.451	.531	12.5mm	0.500-13	M12-1.75	3.62	2.660	232	0.500-13x1.75	M12-1.75x45

CODE 61 SADDLE WELD - TUBE																			
FLANGE SIZE	TUBE SIZE	A	B	C	D	E	F	G	H	J	K DIA THRU		L THREAD		M	N	MOUNTING HARDWARE SHCS		
											Mounting U or X	Mounting M or Y	UNC-2B U or X	ISO 6H M or Y			O-RING	Mounting U	Mounting M
0.75	0.75	1.97	2.56	.875	1.875	1.42	.71	1.250	.752	.382	.406	10.5mm	0.375-16	M10-1.5	1.54	1.420	214	0.375-16x1.50	M10-1.5x40
0.75	1.00	1.97	2.56	.875	1.875	1.42	.71	1.250	.752	.507	.406	10.5mm	0.375-16	M10-1.5	1.54	1.737	214	0.375-16x1.50	M10-1.5x40
1.00	1.00	2.17	2.75	1.031	2.062	1.50	.71	1.560	1.002	.507	.406	10.5mm	0.375-16	M10-1.5	1.81	1.500	219	0.375-16x1.50	M10-1.5x40
1.00	1.25	2.17	2.75	1.031	2.062	1.50	.71	1.560	1.002	.632	.406	10.5mm	0.375-16	M10-1.5	1.81	1.858	219	0.375-16x1.50	M10-1.5x40
1.25	1.25	2.68	3.12	1.188	2.312	1.61	.83	1.750	1.252	.632	.469	10.5mm	0.438-14	M10-1.5	2.22	1.665	222	0.438-14x1.75	M10-1.5x45
1.25	1.50	2.68	3.12	1.188	2.312	1.61	.83	1.750	1.252	.757	.469	10.5mm	0.438-14	M10-1.5	2.22	2.022	222	0.438-14x1.75	M10-1.5x45
1.50	1.75	3.07	3.66	1.406	2.750	1.77	.98	2.115	1.502	.882	.531	12.5mm	0.500-13	M12-1.75	2.50	2.198	225	0.500-13x1.75	M12-1.75x45
2.00	2.00	3.54	4.00	1.688	3.062	1.77	.98	2.490	1.691	1.007	.531	12.5mm	0.500-13	M12-1.75	2.38	2.262	228	0.500-13x1.75	M12-1.75x45
2.00	2.25	3.54	4.00	1.688	3.062	1.77	.98	2.490	2.002	1.132	.531	12.5mm	0.500-13	M12-1.75	3.12	2.247	228	0.500-13x1.75	M12-1.75x45

## Pressure Ratings and Fastener Torque Values

CODE 61 SAE J518-1 / ISO 6162-1						
Dash Size	Inch Size	Max Working Pressure		Fastener Torque Value		
		PSI	MPa	Grade 8 UNC (lb-ft)	Grade 10.9 Metric (N-m)	
-8	0.50"	5000	35.0	24	32	
-12	0.75"	5000	35.0	44	70	
-16	1.00"	4600	32.0	44	70	
-20	1.25"	4000	28.0	68	70	
-24	1.50"	3000	21.0	111	130	
-32	2.00"	3000	21.0	111	130	
-40	2.50"	2500	17.5	111	130	
-48	3.00"	2300	16.0	218	295	
-56	3.50"	500	3.5	218	295	
-64	4.00"	500	3.5	218	295	
-80	5.00"	500	3.5	218	295	

Please note that all pressure ratings in this catalog refer to the flange connection. Adapting the flange to other connections, such as braze tube, welded pipe, or threaded ports / stud ends could reduce maximum working pressure.