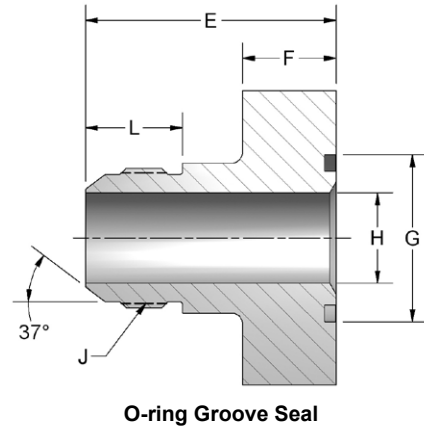
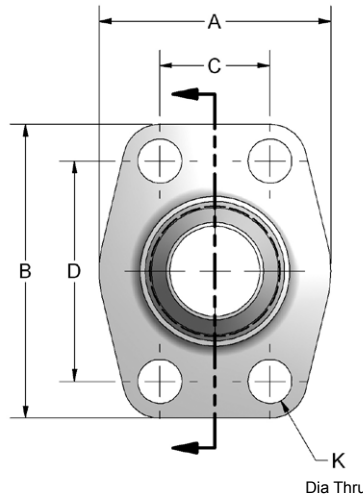
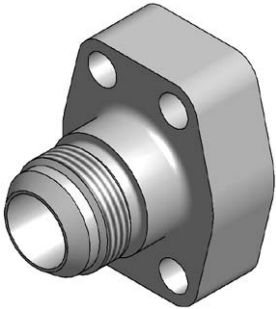


JIC Male Thread



Ordering Information

FG	Flange Size	Material	Product Type	Seal	Rating Code	JIC Size	Thread Type	Mounting																																																												
	<table border="1"> <thead> <tr> <th colspan="2">Flange Size</th> </tr> <tr> <td colspan="2">Rating code 1 or 2</td> </tr> </thead> <tbody> <tr> <td>08</td> <td>0.50"</td> </tr> <tr> <td>12</td> <td>0.75"</td> </tr> <tr> <td>16</td> <td>1.00"</td> </tr> <tr> <td>20</td> <td>1.25"</td> </tr> <tr> <td>24</td> <td>1.50"</td> </tr> </tbody> </table>	Flange Size		Rating code 1 or 2		08	0.50"	12	0.75"	16	1.00"	20	1.25"	24	1.50"	<table border="1"> <thead> <tr> <th colspan="2">Material</th> </tr> </thead> <tbody> <tr> <td>C</td> <td>Carbon Steel</td> </tr> </tbody> </table>	Material		C	Carbon Steel	<table border="1"> <thead> <tr> <th colspan="2">Product Type</th> </tr> </thead> <tbody> <tr> <td>M</td> <td>Male Thread</td> </tr> </tbody> </table>	Product Type		M	Male Thread	<table border="1"> <thead> <tr> <th colspan="2">Seal</th> </tr> </thead> <tbody> <tr> <td>G</td> <td>O-ring Groove</td> </tr> </tbody> </table>	Seal		G	O-ring Groove	<table border="1"> <thead> <tr> <th colspan="2">Rating Code</th> </tr> </thead> <tbody> <tr> <td>1</td> <td>Code 61 • SAE J518 3.5 - 35 MPa • ISO 6162-1</td> </tr> <tr> <td>2</td> <td>Code 62 • SAE J518 40 MPa • ISO 6162-2</td> </tr> </tbody> </table>	Rating Code		1	Code 61 • SAE J518 3.5 - 35 MPa • ISO 6162-1	2	Code 62 • SAE J518 40 MPa • ISO 6162-2	<table border="1"> <thead> <tr> <th colspan="2">JIC Size</th> </tr> </thead> <tbody> <tr> <td colspan="2">Not all JIC sizes are available for each flange size. See chart next page.</td> </tr> <tr> <td>08</td> <td>0.50"</td> </tr> <tr> <td>12</td> <td>0.75"</td> </tr> <tr> <td>16</td> <td>1.00"</td> </tr> <tr> <td>20</td> <td>1.25"</td> </tr> <tr> <td>24</td> <td>1.50"</td> </tr> </tbody> </table>	JIC Size		Not all JIC sizes are available for each flange size. See chart next page.		08	0.50"	12	0.75"	16	1.00"	20	1.25"	24	1.50"	<table border="1"> <thead> <tr> <th colspan="2">Thread Type</th> </tr> </thead> <tbody> <tr> <td>J</td> <td>JIC ISO 8434-2</td> </tr> </tbody> </table>	Thread Type		J	JIC ISO 8434-2	<table border="1"> <thead> <tr> <th colspan="2">Mounting</th> </tr> </thead> <tbody> <tr> <td>U</td> <td>UNC mounting kit</td> </tr> <tr> <td>M</td> <td>Metric mounting kit</td> </tr> <tr> <td>X</td> <td>No kit included UNC mounting holes</td> </tr> <tr> <td>Y</td> <td>No kit included Metric mounting holes</td> </tr> </tbody> </table>	Mounting		U	UNC mounting kit	M	Metric mounting kit	X	No kit included UNC mounting holes	Y	No kit included Metric mounting holes
Flange Size																																																																				
Rating code 1 or 2																																																																				
08	0.50"																																																																			
12	0.75"																																																																			
16	1.00"																																																																			
20	1.25"																																																																			
24	1.50"																																																																			
Material																																																																				
C	Carbon Steel																																																																			
Product Type																																																																				
M	Male Thread																																																																			
Seal																																																																				
G	O-ring Groove																																																																			
Rating Code																																																																				
1	Code 61 • SAE J518 3.5 - 35 MPa • ISO 6162-1																																																																			
2	Code 62 • SAE J518 40 MPa • ISO 6162-2																																																																			
JIC Size																																																																				
Not all JIC sizes are available for each flange size. See chart next page.																																																																				
08	0.50"																																																																			
12	0.75"																																																																			
16	1.00"																																																																			
20	1.25"																																																																			
24	1.50"																																																																			
Thread Type																																																																				
J	JIC ISO 8434-2																																																																			
Mounting																																																																				
U	UNC mounting kit																																																																			
M	Metric mounting kit																																																																			
X	No kit included UNC mounting holes																																																																			
Y	No kit included Metric mounting holes																																																																			



JIC Male Thread

CODE 61 MALE JIC															
FLANGE SIZE	A	B	C	D	E	F	G	H	J JIC	K DIA THRU		L	MOUNTING HARDWARE SHCS		
										Mounting U or X	Mounting M or Y		O-RING	Mounting U	Mounting M
0.50	1.81	2.13	.688	1.500	1.75	.88	1.000	.394	0.750-16	.344	8.5mm	.657	210	0.313-18x1.25	M8-1.25x30
0.75	1.97	2.56	.875	1.875	2.12	.88	1.250	.611	1.062-12	.413	10.5mm	.864	214	0.375-16x1.50	M10-1.5x40
1.00	2.17	2.75	1.031	2.062	2.18	.88	1.560	.844	1.312-12	.413	10.5mm	.911	219	0.375-16x1.50	M10-1.5x40
1.25	2.68	3.12	1.188	2.312	2.44	.88	1.750	1.078	1.625-12	.469	10.5mm	.958	222	0.438-14x1.75	M10-1.5x45
1.50	3.07	3.66	1.406	2.750	2.81	.98	2.115	1.318	1.875-12	.531	12.5mm	1.083	225	0.500-13x1.75	M12-1.75x45

CODE 62 MALE JIC															
FLANGE SIZE	A	B	C	D	E	F	G	H	J JIC	K DIA THRU		L	MOUNTING HARDWARE SHCS		
										Mounting U or X	Mounting M or Y		O-RING	Mounting U	Mounting M
0.50	1.81	2.21	.719	1.594	1.75	.88	1.000	.394	0.750-16	.344	8.5mm	.657	210	0.313-18x1.25	M8-1.25x30
0.75	2.17	2.80	.937	2.000	2.31	.88	1.250	.611	1.062-12	.413	10.5mm	.864	214	0.375-16x1.50	M10-1.5x40
1.00	2.56	3.19	1.093	2.250	2.62	.98	1.560	.844	1.312-12	.492	12.5mm	.911	219	0.438-14x1.75	M12-1.75x45
1.25	3.07	3.75	1.250	2.625	2.81	1.06	1.750	1.078	1.625-12	.531	12.5mm	.958	222	0.500-13x1.75	M12-1.75x45
1.50	3.70	4.41	1.437	3.125	3.25	1.18	2.115	1.318	1.875-12	.656	16.5mm	1.083	225	0.625-11x2.25	M16-2.0x55

Pressure Ratings and Fastener Torque Values

CODE 61 SAE J518-1 / ISO 6162-1						
Dash Size	Inch Size	Max Working Pressure		Fastener Torque Value		Grade 10.9 Metric (N-m)
		PSI	MPa	Grade 8 UNC (lb-ft)	Grade 10.9	
-8	0.50"	5000	35.0	24	32	
-12	0.75"	5000	35.0	44	70	
-16	1.00"	4600	32.0	44	70	
-20	1.25"	4000	28.0	68	70	
-24	1.50"	3000	21.0	111	130	
-32	2.00"	3000	21.0	111	130	
-40	2.50"	2500	17.5	111	130	
-48	3.00"	2300	16.0	218	295	
-56	3.50"	500	3.5	218	295	
-64	4.00"	500	3.5	218	295	
-80	5.00"	500	3.5	218	295	

CODE 62 SAE J518-2 / ISO 6162-2						
Dash Size	Inch Size	Max Working Pressure		Fastener Torque Value		Grade 10.9 Metric (N-m)
		PSI	MPa	Grade 8 UNC (lb-ft)	Grade 10.9	
-8	0.50"	6000	40.0	24	32	
-12	0.75"	6000	40.0	44	70	
-16	1.00"	6000	40.0	68	130	
-20	1.25"	6000	40.0	111	130	
-24	1.50"	6000	40.0	218	295	
-32	2.00"	6000	40.0	332	550	

Please note that all pressure ratings in this catalog refer to the flange connection. Adapting the flange to other connections, such as braze tube, welded pipe, or threaded ports / stud ends could reduce maximum working pressure.