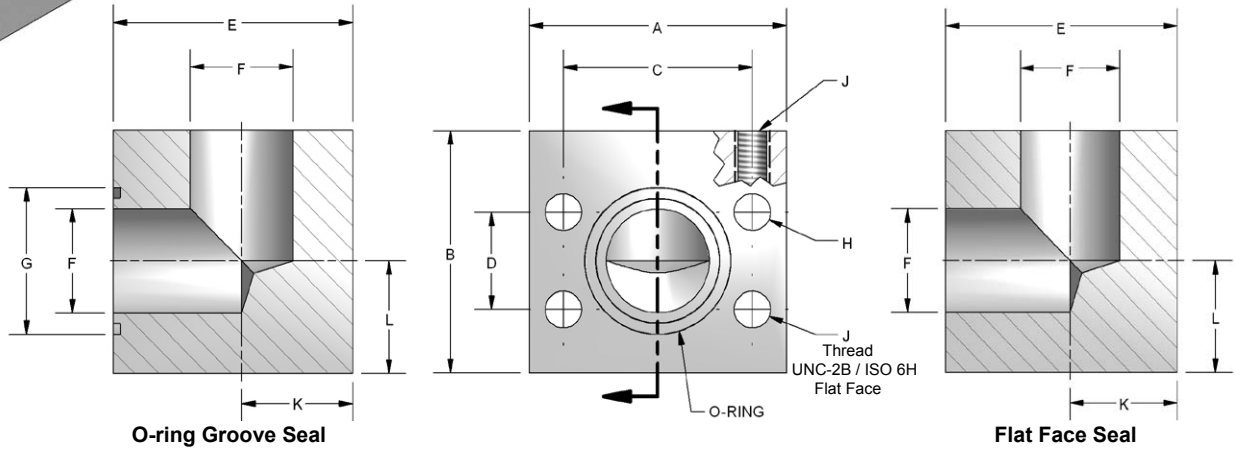
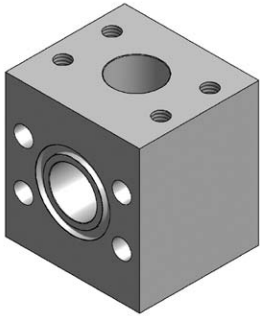


Elbow Junction Block



Ordering Information

FG	Flange Size	Material	Product Type	Seal	Rating Code	Flange Size	Port Type	Mounting																																																																		
	<table border="1"> <thead> <tr> <th colspan="2">Flange Size</th> </tr> </thead> <tbody> <tr> <td>12</td> <td>0.75"</td> </tr> <tr> <td>16</td> <td>1.00"</td> </tr> <tr> <td>20</td> <td>1.25"</td> </tr> <tr> <td>24</td> <td>1.50"</td> </tr> <tr> <td>32</td> <td>2.00"</td> </tr> </tbody> </table>	Flange Size		12	0.75"	16	1.00"	20	1.25"	24	1.50"	32	2.00"	<table border="1"> <thead> <tr> <th colspan="2">Material</th> </tr> </thead> <tbody> <tr> <td>C</td> <td>Carbon Steel</td> </tr> <tr> <td>S</td> <td>Stainless Steel</td> </tr> </tbody> </table>	Material		C	Carbon Steel	S	Stainless Steel	<table border="1"> <thead> <tr> <th colspan="2">Product Type</th> </tr> </thead> <tbody> <tr> <td>C</td> <td>Elbow Junction Block</td> </tr> </tbody> </table>	Product Type		C	Elbow Junction Block	<table border="1"> <thead> <tr> <th colspan="2">Seal</th> </tr> </thead> <tbody> <tr> <td>G</td> <td>O-ring Groove</td> </tr> <tr> <td>F</td> <td>Flat Face</td> </tr> </tbody> </table>	Seal		G	O-ring Groove	F	Flat Face	<table border="1"> <thead> <tr> <th colspan="2">Rating Code</th> </tr> </thead> <tbody> <tr> <td>1</td> <td>Code 61 • SAE J518 3.5 - 35 MPa • ISO 6162-1</td> </tr> <tr> <td>2</td> <td>Code 62 • SAE J518 40 MPa • ISO 6162-2</td> </tr> </tbody> </table>	Rating Code		1	Code 61 • SAE J518 3.5 - 35 MPa • ISO 6162-1	2	Code 62 • SAE J518 40 MPa • ISO 6162-2	<table border="1"> <thead> <tr> <th colspan="2">Flange Size</th> </tr> </thead> <tbody> <tr> <td colspan="2">Some flange combinations are not available. See chart next page.</td> </tr> <tr> <td>12</td> <td>0.75"</td> </tr> <tr> <td>16</td> <td>1.00"</td> </tr> <tr> <td>20</td> <td>1.25"</td> </tr> <tr> <td>24</td> <td>1.50"</td> </tr> <tr> <td>32</td> <td>2.00"</td> </tr> </tbody> </table>	Flange Size		Some flange combinations are not available. See chart next page.		12	0.75"	16	1.00"	20	1.25"	24	1.50"	32	2.00"	<table border="1"> <thead> <tr> <th colspan="2">Port Type</th> </tr> </thead> <tbody> <tr> <td>F</td> <td>Flange</td> </tr> </tbody> </table>	Port Type		F	Flange	<table border="1"> <thead> <tr> <th colspan="2">Mounting</th> </tr> </thead> <tbody> <tr> <td colspan="2">Seal code G only</td> </tr> <tr> <td>U</td> <td>UNC mounting kit</td> </tr> <tr> <td>M</td> <td>Metric mounting kit</td> </tr> <tr> <td colspan="2">Seal code G or F</td> </tr> <tr> <td>X</td> <td>No kit included UNC mounting holes</td> </tr> <tr> <td>Y</td> <td>No kit included Metric mounting holes</td> </tr> </tbody> </table>	Mounting		Seal code G only		U	UNC mounting kit	M	Metric mounting kit	Seal code G or F		X	No kit included UNC mounting holes	Y	No kit included Metric mounting holes
Flange Size																																																																										
12	0.75"																																																																									
16	1.00"																																																																									
20	1.25"																																																																									
24	1.50"																																																																									
32	2.00"																																																																									
Material																																																																										
C	Carbon Steel																																																																									
S	Stainless Steel																																																																									
Product Type																																																																										
C	Elbow Junction Block																																																																									
Seal																																																																										
G	O-ring Groove																																																																									
F	Flat Face																																																																									
Rating Code																																																																										
1	Code 61 • SAE J518 3.5 - 35 MPa • ISO 6162-1																																																																									
2	Code 62 • SAE J518 40 MPa • ISO 6162-2																																																																									
Flange Size																																																																										
Some flange combinations are not available. See chart next page.																																																																										
12	0.75"																																																																									
16	1.00"																																																																									
20	1.25"																																																																									
24	1.50"																																																																									
32	2.00"																																																																									
Port Type																																																																										
F	Flange																																																																									
Mounting																																																																										
Seal code G only																																																																										
U	UNC mounting kit																																																																									
M	Metric mounting kit																																																																									
Seal code G or F																																																																										
X	No kit included UNC mounting holes																																																																									
Y	No kit included Metric mounting holes																																																																									

Elbow Junction Block

CODE 61 ELBOW JUNCTION BLOCK																
FLANGE SIZE	A	B	C	D	E	F	G	H DIA THRU		J THREAD		K	L	MOUNTING HARDWARE SHCS		
								Mounting U or X	Mounting M or Y	UNC-2B U or X	ISO 6H M or Y			O-RING	Mounting U	Mounting M
0.75	2.62	2.50	1.875	0.875	2.25	0.75	1.250	.406	10.5mm	0.375-16	M10-1.5	1.03	1.03	214	0.375-16x3.00	M10-1.5x75
1.00	2.82	2.50	2.062	1.031	2.50	1.00	1.560	.406	10.5mm	0.375-16	M10-1.5	1.16	1.09	219	0.375-16x3.25	M10-1.5x80
1.25	3.19	3.00	2.312	1.188	3.00	1.25	1.750	.469	10.5mm	0.438-14	M10-1.5	1.44	1.31	222	0.438-14x4.00	M10-1.5x100
1.50	3.75	3.50	2.750	1.406	3.50	1.50	2.115	.531	12.5mm	0.500-13	M12-1.75	1.62	1.62	225	0.500-13x4.50	M12-1.75x110
2.00	4.00	4.00	3.062	1.688	4.00	1.94	2.490	.531	12.5mm	0.500-13	M12-1.75	1.91	1.91	228	0.500-13x5.00	M12-1.75x130

CODE 62 ELBOW JUNCTION BLOCK																
FLANGE SIZE	A	B	C	D	E	F	G	H DIA THRU		J THREAD		K	L	MOUNTING HARDWARE SHCS		
								Mounting U or X	Mounting M or Y	UNC-2B U or X	ISO 6H M or Y			O-RING	Mounting U	Mounting M
0.75	2.82	2.50	2.000	.937	2.50	0.75	1.250	.406	10.5mm	0.375-16	M10-1.5	1.19	1.06	214	0.375-16x3.25	M10-1.5x80
1.00	3.19	3.00	2.250	1.093	3.00	1.00	1.560	.492	12.5mm	0.438-14	M12-1.75	1.38	1.38	219	0.438-14x4.00	M12-1.75x100
1.25	3.75	3.50	2.625	1.250	3.50	1.25	1.750	.531	12.5mm	0.500-13	M12-1.75	1.62	1.41	222	0.500-13x4.50	M12-1.75x110
1.50	4.50	4.00	3.125	1.437	4.00	1.50	2.115	.656	16.5mm	0.625-11	M16-2.0	1.88	1.75	225	0.625-11x5.00	M16-2.0x130
2.00	5.25	5.00	3.812	1.750	5.00	1.94	2.490	.781	21.0mm	0.750-10	M20-2.5	2.25	2.50	228	0.750-10x6.00	M20-2.5x150

Pressure Ratings and Fastener Torque Values

CODE 61 SAE J518-1 / ISO 6162-1						
Dash Size	Inch Size	Max Working Pressure		Fastener Torque Value		
		PSI	MPa	Grade 8 UNC (lb-ft)	Grade 10.9 Metric (N-m)	
-8	0.50"	5000	35.0	24	32	
-12	0.75"	5000	35.0	44	70	
-16	1.00"	4600	32.0	44	70	
-20	1.25"	4000	28.0	68	70	
-24	1.50"	3000	21.0	111	130	
-32	2.00"	3000	21.0	111	130	
-40	2.50"	2500	17.5	111	130	
-48	3.00"	2300	16.0	218	295	
-56	3.50"	500	3.5	218	295	
-64	4.00"	500	3.5	218	295	
-80	5.00"	500	3.5	218	295	

CODE 62 SAE J518-2 / ISO 6162-2					
Dash Size	Inch Size	Max Working Pressure		Fastener Torque Value	
		PSI	MPa	Grade 8 UNC (lb-ft)	Grade 10.9 Metric (N-m)
-8	0.50"	6000	40.0	24	32
-12	0.75"	6000	40.0	44	70
-16	1.00"	6000	40.0	68	130
-20	1.25"	6000	40.0	111	130
-24	1.50"	6000	40.0	218	295
-32	2.00"	6000	40.0	332	550

Please note that all pressure ratings in this catalog refer to the flange connection. Adapting the flange to other connections, such as braze tube, welded pipe, or threaded ports / stud ends could reduce maximum working pressure.