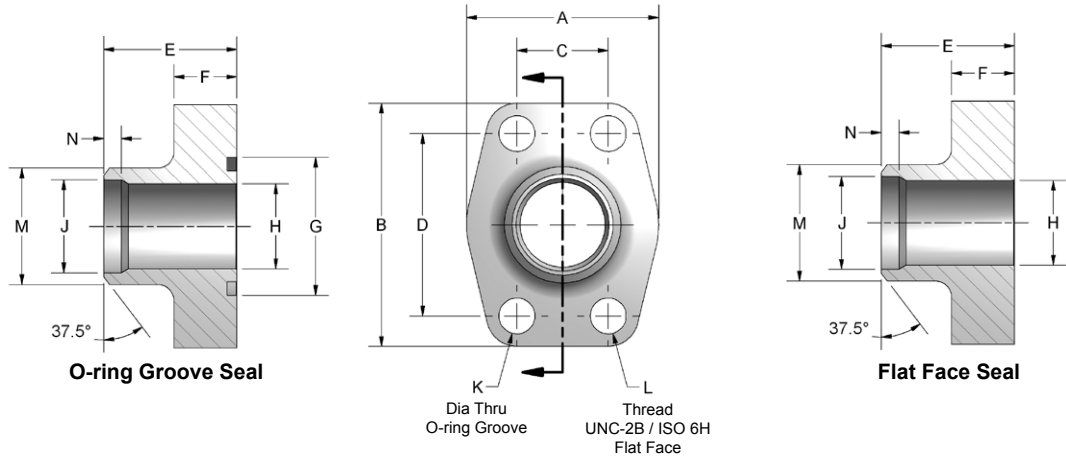
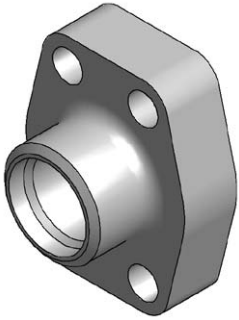


Butt Weld Pipe - Code 61

Carbon Steel



Ordering Information

FG	Flange Size	Material	Product Type	Seal	Rating Code	Pipe Rating	Mounting																																																										
	<table border="1"> <thead> <tr> <th colspan="2">Flange Size</th> </tr> </thead> <tbody> <tr> <td>08</td> <td>0.50"</td> </tr> <tr> <td>12</td> <td>0.75"</td> </tr> <tr> <td>16</td> <td>1.00"</td> </tr> <tr> <td>20</td> <td>1.25"</td> </tr> <tr> <td>24</td> <td>1.50"</td> </tr> <tr> <td>32</td> <td>2.00"</td> </tr> <tr> <td>40</td> <td>2.50"</td> </tr> <tr> <td>48</td> <td>3.00"</td> </tr> </tbody> </table>	Flange Size		08	0.50"	12	0.75"	16	1.00"	20	1.25"	24	1.50"	32	2.00"	40	2.50"	48	3.00"	<table border="1"> <thead> <tr> <th colspan="2">Material</th> </tr> </thead> <tbody> <tr> <td>C</td> <td>Carbon Steel</td> </tr> </tbody> </table>	Material		C	Carbon Steel	<table border="1"> <thead> <tr> <th colspan="2">Product Type</th> </tr> </thead> <tbody> <tr> <td>B</td> <td>Butt Weld Pipe</td> </tr> </tbody> </table>	Product Type		B	Butt Weld Pipe	<table border="1"> <thead> <tr> <th colspan="2">Seal</th> </tr> </thead> <tbody> <tr> <td>G</td> <td>O-ring Groove</td> </tr> <tr> <td>F</td> <td>Flat Face</td> </tr> </tbody> </table>	Seal		G	O-ring Groove	F	Flat Face	<table border="1"> <thead> <tr> <th colspan="2">Rating Code</th> </tr> </thead> <tbody> <tr> <td>1</td> <td>Code 61 • SAE J518 3.5 - 35 MPa • ISO 6162-1</td> </tr> </tbody> </table>	Rating Code		1	Code 61 • SAE J518 3.5 - 35 MPa • ISO 6162-1	<table border="1"> <thead> <tr> <th colspan="2">Pipe Rating</th> </tr> </thead> <tbody> <tr> <td>040</td> <td>Schedule 40 ANSI/ASME B36.10</td> </tr> <tr> <td>080</td> <td>Schedule 80 ANSI/ASME B36.10</td> </tr> <tr> <td>160</td> <td>Schedule 160 ANSI/ASME B36.10</td> </tr> </tbody> </table>	Pipe Rating		040	Schedule 40 ANSI/ASME B36.10	080	Schedule 80 ANSI/ASME B36.10	160	Schedule 160 ANSI/ASME B36.10	<table border="1"> <thead> <tr> <th colspan="2">Mounting</th> </tr> </thead> <tbody> <tr> <td colspan="2">Seal code G only</td> </tr> <tr> <td>U</td> <td>UNC mounting kit</td> </tr> <tr> <td>M</td> <td>Metric mounting kit</td> </tr> <tr> <td colspan="2">Seal code G or F</td> </tr> <tr> <td>X</td> <td>No kit included UNC mounting holes</td> </tr> <tr> <td>Y</td> <td>No kit included Metric mounting holes</td> </tr> </tbody> </table>	Mounting		Seal code G only		U	UNC mounting kit	M	Metric mounting kit	Seal code G or F		X	No kit included UNC mounting holes	Y	No kit included Metric mounting holes
Flange Size																																																																	
08	0.50"																																																																
12	0.75"																																																																
16	1.00"																																																																
20	1.25"																																																																
24	1.50"																																																																
32	2.00"																																																																
40	2.50"																																																																
48	3.00"																																																																
Material																																																																	
C	Carbon Steel																																																																
Product Type																																																																	
B	Butt Weld Pipe																																																																
Seal																																																																	
G	O-ring Groove																																																																
F	Flat Face																																																																
Rating Code																																																																	
1	Code 61 • SAE J518 3.5 - 35 MPa • ISO 6162-1																																																																
Pipe Rating																																																																	
040	Schedule 40 ANSI/ASME B36.10																																																																
080	Schedule 80 ANSI/ASME B36.10																																																																
160	Schedule 160 ANSI/ASME B36.10																																																																
Mounting																																																																	
Seal code G only																																																																	
U	UNC mounting kit																																																																
M	Metric mounting kit																																																																
Seal code G or F																																																																	
X	No kit included UNC mounting holes																																																																
Y	No kit included Metric mounting holes																																																																



Butt Weld Pipe - Code 61

Carbon Steel

CODE 61 BUTT WELD - SCHEDULE 40 PIPE																			
PIPE SIZE	FLANGE SIZE	A	B	C	D	E	F	G	H	J	K DIA THRU		L THREAD		M	N	MOUNTING HARDWARE SHCS		
											Mounting U or X	Mounting M or Y	UNC-2B U or X	ISO 6H M or Y			O-RING	Mounting U	Mounting M
0.50	0.50	1.81	2.13	.688	1.500	1.42	.63	1.000	.548	.624	.344	8.5mm	0.313-18	M8-1.25	.840	.20	210	0.313-18x1.25	M8-1.25x30
0.75	0.75	1.97	2.56	.875	1.875	1.42	.71	1.250	.744	.846	.406	10.5mm	0.375-16	M10-1.5	1.050	.20	214	0.375-16x1.50	M10-1.5x40
1.00	1.00	2.17	2.75	1.031	2.062	1.50	.71	1.560	.959	1.051	.406	10.5mm	0.375-16	M10-1.5	1.315	.20	219	0.375-16x1.50	M10-1.5x40
1.25	1.25	2.68	3.12	1.188	2.312	1.61	.83	1.750	1.280	1.382	.469	10.5mm	0.438-14	M10-1.5	1.660	.20	222	0.438-14x1.75	M10-1.5x45
1.50	1.50	3.07	3.66	1.406	2.750	1.73	.98	2.115	1.502	1.612	.531	12.5mm	0.500-13	M12-1.75	1.900	.20	225	0.500-13x1.75	M12-1.75x45
2.00	2.00	3.54	4.00	1.688	3.062	1.77	.98	2.490	1.941	2.069	.531	12.5mm	0.500-13	M12-1.75	2.375	.20	228	0.500-13x1.75	M12-1.75x45
2.50	2.50	4.09	4.49	2.000	3.500	1.97	.98	2.995	2.325	2.471	.531	12.5mm	0.500-13	M12-1.75	2.875	.20	232	0.500-13x1.75	M12-1.75x45
3.00	3.00	4.88	5.28	2.438	4.188	1.97	1.06	3.615	2.902	3.070	.656	16.5mm	0.625-11	M16-2.0	3.500	.20	237	0.625-11x2.00	M16-2.0x50

CODE 61 BUTT WELD - SCHEDULE 80 PIPE																				
PIPE SIZE	FLANGE SIZE	A	B	C	D	E	F	G	H	J	K DIA THRU		L THREAD		M	N	MOUNTING HARDWARE SHCS			
											Mounting U or X	Mounting M or Y	UNC-2B U or X	ISO 6H M or Y			O-RING	Mounting U	Mounting M	
0.50	0.50	1.81	2.13	.688	1.500	1.42	.63	1.000	.548	SCHEDULE 40 ONLY	.344	8.5mm	0.313-18	M8-1.25	.840	SCHEDULE 40 ONLY	210	0.313-18x1.25	M8-1.25x30	
0.75	0.75	1.97	2.56	.875	1.875	1.42	.71	1.250	.744		.406	10.5mm	0.375-16	M10-1.5	1.050		.20	214	0.375-16x1.50	M10-1.5x40
1.00	1.00	2.17	2.75	1.031	2.062	1.50	.71	1.560	.959		.406	10.5mm	0.375-16	M10-1.5	1.315		.20	219	0.375-16x1.50	M10-1.5x40
1.25	1.25	2.68	3.12	1.188	2.312	1.61	.83	1.750	1.280		.469	10.5mm	0.438-14	M10-1.5	1.660		.20	222	0.438-14x1.75	M10-1.5x45
1.50	1.50	3.07	3.66	1.406	2.750	1.73	.98	2.115	1.502		.531	12.5mm	0.500-13	M12-1.75	1.900		.20	225	0.500-13x1.75	M12-1.75x45
2.00	2.00	3.54	4.00	1.688	3.062	1.77	.98	2.490	1.941		.531	12.5mm	0.500-13	M12-1.75	2.375		.20	228	0.500-13x1.75	M12-1.75x45
2.50	2.50	4.09	4.49	2.000	3.500	1.97	.98	2.995	2.325		.531	12.5mm	0.500-13	M12-1.75	2.875		.20	232	0.500-13x1.75	M12-1.75x45
3.00	3.00	4.88	5.28	2.438	4.188	1.97	1.06	3.615	2.902		.656	16.5mm	0.625-11	M16-2.0	3.500		.20	237	0.625-11x2.00	M16-2.0x50

CODE 61 BUTT WELD - SCHEDULE 160 PIPE																				
PIPE SIZE	FLANGE SIZE	A	B	C	D	E	F	G	H	J	K DIA THRU		L THREAD		M	N	MOUNTING HARDWARE SHCS			
											Mounting U or X	Mounting M or Y	UNC-2B U or X	ISO 6H M or Y			O-RING	Mounting U	Mounting M	
0.50	0.50	1.81	2.13	.688	1.500	1.42	.63	1.000	.466	SCHEDULE 40 ONLY	.344	8.5mm	0.313-18	M8-1.25	.840	SCHEDULE 40 ONLY	210	0.313-18x1.25	M8-1.25x30	
0.75	0.75	1.97	2.56	.875	1.875	1.42	.71	1.250	.614		.406	10.5mm	0.375-16	M10-1.5	1.050		.20	214	0.375-16x1.50	M10-1.5x40
1.00	1.00	2.17	2.75	1.031	2.062	1.50	.71	1.560	.817		.406	10.5mm	0.375-16	M10-1.5	1.315		.20	219	0.375-16x1.50	M10-1.5x40
1.25	1.25	2.68	3.12	1.188	2.312	1.61	.83	1.750	1.162		.469	10.5mm	0.438-14	M10-1.5	1.660		.20	222	0.438-14x1.75	M10-1.5x45
1.50	1.50	3.07	3.66	1.406	2.750	1.73	.98	2.115	1.340		.531	12.5mm	0.500-13	M12-1.75	1.900		.20	225	0.500-13x1.75	M12-1.75x45
2.00	2.00	3.54	4.00	1.688	3.062	1.77	.98	2.490	1.689		.531	12.5mm	0.500-13	M12-1.75	2.375		.20	228	0.500-13x1.75	M12-1.75x45
2.50	2.50	4.09	4.49	2.000	3.500	1.97	.98	2.995	2.127		.531	12.5mm	0.500-13	M12-1.75	2.875		.20	232	0.500-13x1.75	M12-1.75x45
3.00	3.00	4.88	5.28	2.438	4.188	1.97	1.06	3.615	2.626		.656	16.5mm	0.625-11	M16-2.0	3.500		.20	237	0.625-11x2.00	M16-2.0x50

For standard pressure ratings, see page 3.