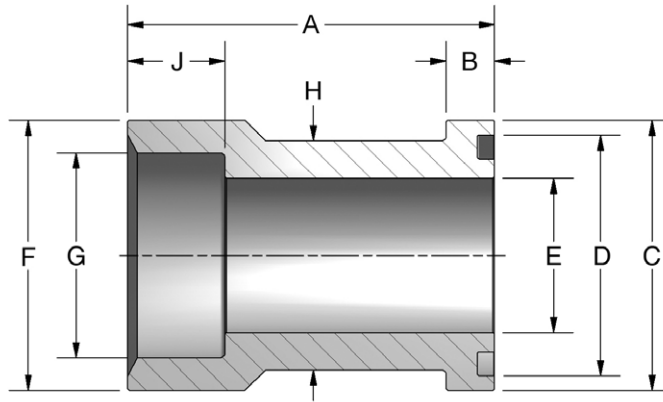
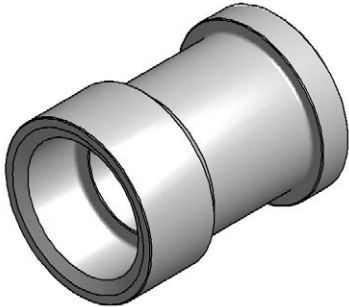


# Female Flange Head Adaptor

Socket Weld Pipe



## Ordering Information

FF	Flange Size	Material	Product Type	Seal	Rating Code	Pipe Size	Port Type																																																																		
	<table border="1"> <thead> <tr> <th colspan="2">Flange Size</th> </tr> </thead> <tbody> <tr> <td colspan="2">Rating code 1 only</td> </tr> <tr> <td>08</td> <td>0.50"</td> </tr> <tr> <td colspan="2">Rating code 1 or 2</td> </tr> <tr> <td>12</td> <td>0.75"</td> </tr> <tr> <td>16</td> <td>1.00"</td> </tr> <tr> <td>20</td> <td>1.25"</td> </tr> <tr> <td>24</td> <td>1.50"</td> </tr> <tr> <td>32</td> <td>2.00"</td> </tr> <tr> <td colspan="2">Rating code 1 only</td> </tr> <tr> <td>40</td> <td>2.50"</td> </tr> <tr> <td>48</td> <td>3.00"</td> </tr> </tbody> </table>	Flange Size		Rating code 1 only		08	0.50"	Rating code 1 or 2		12	0.75"	16	1.00"	20	1.25"	24	1.50"	32	2.00"	Rating code 1 only		40	2.50"	48	3.00"	<table border="1"> <thead> <tr> <th colspan="2">Material</th> </tr> </thead> <tbody> <tr> <td>C</td> <td>Carbon Steel</td> </tr> </tbody> </table>	Material		C	Carbon Steel	<table border="1"> <thead> <tr> <th colspan="2">Product Type</th> </tr> </thead> <tbody> <tr> <td>W</td> <td>Socket Weld Pipe</td> </tr> </tbody> </table>	Product Type		W	Socket Weld Pipe	<table border="1"> <thead> <tr> <th colspan="2">Seal</th> </tr> </thead> <tbody> <tr> <td>G</td> <td>O-ring Groove</td> </tr> </tbody> </table>	Seal		G	O-ring Groove	<table border="1"> <thead> <tr> <th colspan="2">Rating Code</th> </tr> </thead> <tbody> <tr> <td>1</td> <td>Code 61 • SAE J518 3.5 - 35 MPa • ISO 6162-1</td> </tr> <tr> <td>2</td> <td>Code 62 • SAE J518 40 MPa • ISO 6162-2</td> </tr> </tbody> </table>	Rating Code		1	Code 61 • SAE J518 3.5 - 35 MPa • ISO 6162-1	2	Code 62 • SAE J518 40 MPa • ISO 6162-2	<table border="1"> <thead> <tr> <th colspan="2">Pipe Size</th> </tr> </thead> <tbody> <tr> <td colspan="2">Not all pipe sizes are available for each flange size. See chart next page.</td> </tr> <tr> <td>08</td> <td>0.50"</td> </tr> <tr> <td>12</td> <td>0.75"</td> </tr> <tr> <td>16</td> <td>1.00"</td> </tr> <tr> <td>20</td> <td>1.25"</td> </tr> <tr> <td>24</td> <td>1.50"</td> </tr> <tr> <td>32</td> <td>2.00"</td> </tr> <tr> <td>40</td> <td>2.50"</td> </tr> <tr> <td>48</td> <td>3.00"</td> </tr> </tbody> </table>	Pipe Size		Not all pipe sizes are available for each flange size. See chart next page.		08	0.50"	12	0.75"	16	1.00"	20	1.25"	24	1.50"	32	2.00"	40	2.50"	48	3.00"	<table border="1"> <thead> <tr> <th colspan="2">Port Type</th> </tr> </thead> <tbody> <tr> <td>P</td> <td>Pipe Socket Weld</td> </tr> </tbody> </table>	Port Type		P	Pipe Socket Weld
Flange Size																																																																									
Rating code 1 only																																																																									
08	0.50"																																																																								
Rating code 1 or 2																																																																									
12	0.75"																																																																								
16	1.00"																																																																								
20	1.25"																																																																								
24	1.50"																																																																								
32	2.00"																																																																								
Rating code 1 only																																																																									
40	2.50"																																																																								
48	3.00"																																																																								
Material																																																																									
C	Carbon Steel																																																																								
Product Type																																																																									
W	Socket Weld Pipe																																																																								
Seal																																																																									
G	O-ring Groove																																																																								
Rating Code																																																																									
1	Code 61 • SAE J518 3.5 - 35 MPa • ISO 6162-1																																																																								
2	Code 62 • SAE J518 40 MPa • ISO 6162-2																																																																								
Pipe Size																																																																									
Not all pipe sizes are available for each flange size. See chart next page.																																																																									
08	0.50"																																																																								
12	0.75"																																																																								
16	1.00"																																																																								
20	1.25"																																																																								
24	1.50"																																																																								
32	2.00"																																																																								
40	2.50"																																																																								
48	3.00"																																																																								
Port Type																																																																									
P	Pipe Socket Weld																																																																								

# Female Flange Head Adaptor

## Socket Weld Pipe

CODE 61 SOCKET WELD TO FLANGE HEAD FOR PIPE										
FLANGE SIZE	PIPE SIZE	A	B	C	D	E	F	G	H	J
0.50	0.50	2.34	.265	1.187	1.000	.500	1.25	.855	.924	.56
0.75	0.75	2.34	.265	1.500	1.250	.750	1.50	1.062	1.234	.56
1.00	1.00	2.38	.315	1.750	1.560	1.000	1.75	1.328	1.484	.63
1.25	1.25	2.62	.315	2.000	1.750	1.250	2.00	1.672	1.684	.69
1.50	1.50	2.88	.315	2.375	2.115	1.500	2.38	1.922	1.964	.75
2.00	2.00	3.00	.375	2.812	2.490	2.000	2.81	2.406	2.434	.88
2.50	2.50	3.06	.375	3.312	2.995	2.500	3.31	2.906	2.920	1.00
3.00	3.00	3.88	.375	4.000	3.615	2.875	4.00	3.547	3.534	1.25

O-ring not included.

CODE 62 SOCKET WELD TO FLANGE HEAD FOR PIPE										
FLANGE SIZE	PIPE SIZE	A	B	C	D	E	F	G	H	J
0.75	0.75	2.75	.345	1.625	1.250	.750	1.750	1.062	1.234	.63
1.00	1.00	3.06	.375	1.875	1.560	1.000	2.000	1.328	1.484	.63
1.25	1.25	3.31	.405	2.125	1.750	1.125	2.312	1.672	1.704	.69
1.50	1.50	3.93	.495	2.500	2.115	1.375	2.750	1.922	1.984	.75
2.00	2.00	4.06	.495	3.125	2.490	1.875	3.125	2.406	2.604	.88

O-ring not included.

### Pressure Ratings and Fastener Torque Values

CODE 61 SAE J518-1 / ISO 6162-1					
Dash Size	Inch Size	Max Working Pressure		Fastener Torque Value	
		PSI	MPa	Grade 8 UNC (lb-ft)	Grade 10.9 Metric (N-m)
-8	0.50"	5000	35.0	24	32
-12	0.75"	5000	35.0	44	70
-16	1.00"	4600	32.0	44	70
-20	1.25"	4000	28.0	68	70
-24	1.50"	3000	21.0	111	130
-32	2.00"	3000	21.0	111	130
-40	2.50"	2500	17.5	111	130
-48	3.00"	2300	16.0	218	295
-56	3.50"	500	3.5	218	295
-64	4.00"	500	3.5	218	295
-80	5.00"	500	3.5	218	295

CODE 62 SAE J518-2 / ISO 6162-2					
Dash Size	Inch Size	Max Working Pressure		Fastener Torque Value	
		PSI	MPa	Grade 8 UNC (lb-ft)	Grade 10.9 Metric (N-m)
-8	0.50"	6000	40.0	24	32
-12	0.75"	6000	40.0	44	70
-16	1.00"	6000	40.0	68	130
-20	1.25"	6000	40.0	111	130
-24	1.50"	6000	40.0	218	295
-32	2.00"	6000	40.0	332	550

Please note that all pressure ratings in this catalog refer to the flange connection. Adapting the flange to other connections, such as braze tube, welded pipe, or threaded ports / stud ends could reduce maximum working pressure.