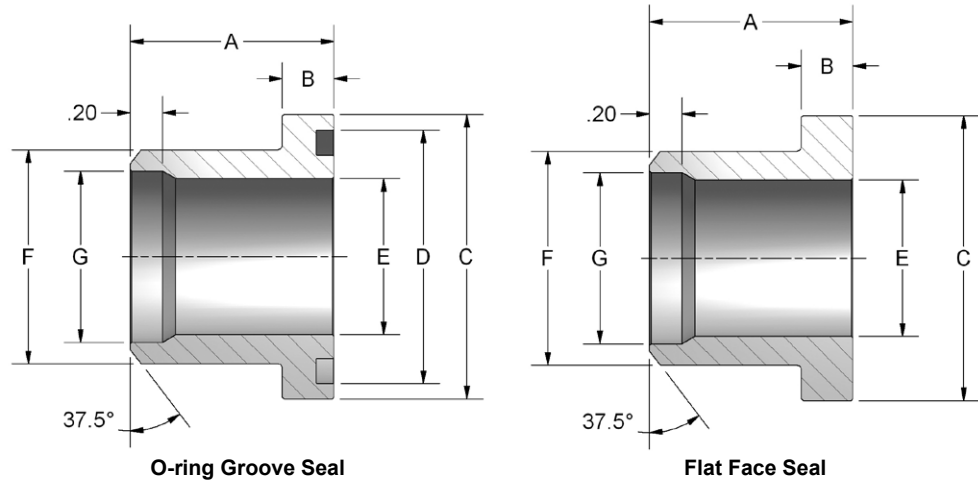
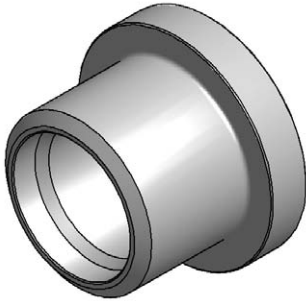


# Butt Weld Flange Head

Code 61 • Schedule 40



## Ordering Information

FF	Flange Size	Material	Product Type	Seal	Rating Code	Pipe Rating																																										
	<table border="1"> <thead> <tr> <th colspan="2">Flange Size</th> </tr> </thead> <tbody> <tr><td>08</td><td>0.50"</td></tr> <tr><td>12</td><td>0.75"</td></tr> <tr><td>16</td><td>1.00"</td></tr> <tr><td>20</td><td>1.25"</td></tr> <tr><td>24</td><td>1.50"</td></tr> <tr><td>32</td><td>2.00"</td></tr> <tr><td>40</td><td>2.50"</td></tr> <tr><td>48</td><td>3.00"</td></tr> <tr><td>64</td><td>4.00"</td></tr> </tbody> </table>	Flange Size		08	0.50"	12	0.75"	16	1.00"	20	1.25"	24	1.50"	32	2.00"	40	2.50"	48	3.00"	64	4.00"	<table border="1"> <thead> <tr> <th colspan="2">Material</th> </tr> </thead> <tbody> <tr> <td>C</td> <td>Carbon Steel</td> </tr> </tbody> </table>	Material		C	Carbon Steel	<table border="1"> <thead> <tr> <th colspan="2">Product Type</th> </tr> </thead> <tbody> <tr> <td>B</td> <td>Butt Weld Pipe</td> </tr> </tbody> </table>	Product Type		B	Butt Weld Pipe	<table border="1"> <thead> <tr> <th colspan="2">Seal</th> </tr> </thead> <tbody> <tr> <td>G</td> <td>O-ring Groove</td> </tr> <tr> <td>F</td> <td>Flat Face</td> </tr> </tbody> </table>	Seal		G	O-ring Groove	F	Flat Face	<table border="1"> <thead> <tr> <th colspan="2">Rating Code</th> </tr> </thead> <tbody> <tr> <td>1</td> <td>Code 61 • SAE J518 3.5 - 35 MPa • ISO 6162-1</td> </tr> </tbody> </table>	Rating Code		1	Code 61 • SAE J518 3.5 - 35 MPa • ISO 6162-1	<table border="1"> <thead> <tr> <th colspan="2">Pipe Rating</th> </tr> </thead> <tbody> <tr> <td>040</td> <td>Schedule 40 ANSI/ASME B36.10</td> </tr> </tbody> </table>	Pipe Rating		040	Schedule 40 ANSI/ASME B36.10
Flange Size																																																
08	0.50"																																															
12	0.75"																																															
16	1.00"																																															
20	1.25"																																															
24	1.50"																																															
32	2.00"																																															
40	2.50"																																															
48	3.00"																																															
64	4.00"																																															
Material																																																
C	Carbon Steel																																															
Product Type																																																
B	Butt Weld Pipe																																															
Seal																																																
G	O-ring Groove																																															
F	Flat Face																																															
Rating Code																																																
1	Code 61 • SAE J518 3.5 - 35 MPa • ISO 6162-1																																															
Pipe Rating																																																
040	Schedule 40 ANSI/ASME B36.10																																															

# Butt Weld Flange Head

Code 61 • Schedule 40

CODE 61 BUTT WELD TO FLANGE HEAD FOR SCHED 40								
FLANGE SIZE	PIPE SIZE	A	B	C	D	E	F	G
0.50	0.50	1.06	.265	1.188	1.000	.548	.840	.624
0.75	0.75	1.06	.265	1.500	1.250	.744	1.050	.826
1.00	1.00	1.25	.315	1.750	1.560	.959	1.315	1.051
1.25	1.25	1.44	.315	2.000	1.750	1.280	1.660	1.382
1.50	1.50	1.75	.315	2.375	2.115	1.502	1.900	1.612
2.00	2.00	2.00	.375	2.812	2.490	1.941	2.375	2.069
2.50	2.50	2.31	.375	3.312	2.995	2.325	2.875	2.471
3.00	3.00	2.31	.375	4.000	3.615	2.902	3.500	3.070
4.00	4.00	1.90	.442	5.000	4.595	3.828	4.500	4.028

O-ring not included.

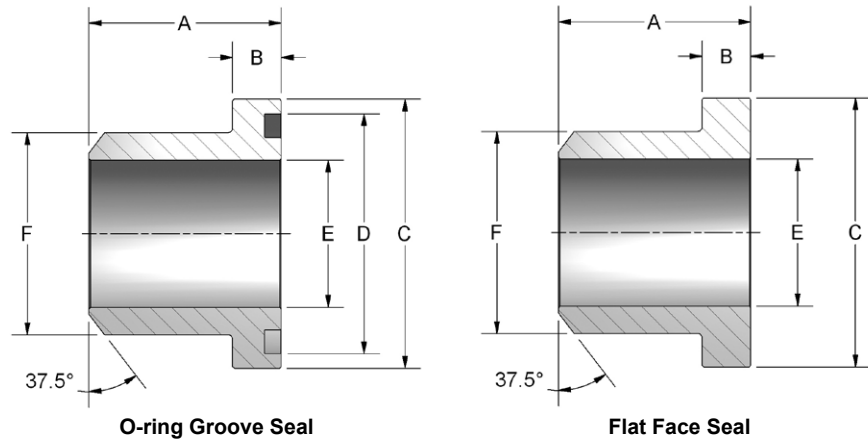
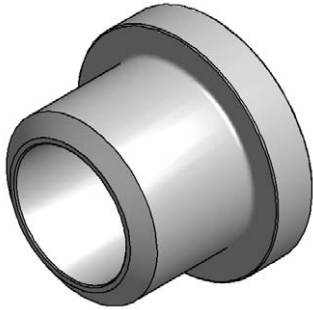
## Pressure Ratings and Fastener Torque Values

CODE 61 SAE J518-1 / ISO 6162-1					
Dash Size	Inch Size	Max Working Pressure		Fastener Torque Value	
		PSI	MPa	Grade 8 UNC (lb-ft)	Grade 10.9 Metric (N-m)
-8	0.50"	5000	35.0	24	32
-12	0.75"	5000	35.0	44	70
-16	1.00"	4600	32.0	44	70
-20	1.25"	4000	28.0	68	70
-24	1.50"	3000	21.0	111	130
-32	2.00"	3000	21.0	111	130
-40	2.50"	2500	17.5	111	130
-48	3.00"	2300	16.0	218	295
-56	3.50"	500	3.5	218	295
-64	4.00"	500	3.5	218	295
-80	5.00"	500	3.5	218	295

Please note that all pressure ratings in this catalog refer to the flange connection. Adapting the flange to other connections, such as braze tube, welded pipe, or threaded ports / stud ends could reduce maximum working pressure.

# Butt Weld Flange Head

Code 61 • Schedule 80 / 160



## Ordering Information

FF	Flange Size	Material	Product Type	Seal	Rating Code	Pipe Rating																																										
	<table border="1"> <thead> <tr> <th colspan="2">Flange Size</th> </tr> </thead> <tbody> <tr> <td>08</td> <td>0.50"</td> </tr> <tr> <td>12</td> <td>0.75"</td> </tr> <tr> <td>16</td> <td>1.00"</td> </tr> <tr> <td>20</td> <td>1.25"</td> </tr> <tr> <td>24</td> <td>1.50"</td> </tr> <tr> <td>32</td> <td>2.00"</td> </tr> <tr> <td>40</td> <td>2.50"</td> </tr> <tr> <td>48</td> <td>3.00"</td> </tr> </tbody> </table>	Flange Size		08	0.50"	12	0.75"	16	1.00"	20	1.25"	24	1.50"	32	2.00"	40	2.50"	48	3.00"	<table border="1"> <thead> <tr> <th colspan="2">Material</th> </tr> </thead> <tbody> <tr> <td>C</td> <td>Carbon Steel</td> </tr> </tbody> </table>	Material		C	Carbon Steel	<table border="1"> <thead> <tr> <th colspan="2">Product Type</th> </tr> </thead> <tbody> <tr> <td>B</td> <td>Butt Weld Pipe</td> </tr> </tbody> </table>	Product Type		B	Butt Weld Pipe	<table border="1"> <thead> <tr> <th colspan="2">Seal</th> </tr> </thead> <tbody> <tr> <td>G</td> <td>O-ring Groove</td> </tr> <tr> <td>F</td> <td>Flat Face</td> </tr> </tbody> </table>	Seal		G	O-ring Groove	F	Flat Face	<table border="1"> <thead> <tr> <th colspan="2">Rating Code</th> </tr> </thead> <tbody> <tr> <td>1</td> <td>Code 61 • SAE J518 3.5 - 35 MPa • ISO 6162-1</td> </tr> </tbody> </table>	Rating Code		1	Code 61 • SAE J518 3.5 - 35 MPa • ISO 6162-1	<table border="1"> <thead> <tr> <th colspan="2">Pipe Rating</th> </tr> </thead> <tbody> <tr> <td>080</td> <td>Schedule 80 ANSI/ASME B36.10</td> </tr> <tr> <td>160</td> <td>Schedule 160 ANSI/ASME B36.10</td> </tr> </tbody> </table>	Pipe Rating		080	Schedule 80 ANSI/ASME B36.10	160	Schedule 160 ANSI/ASME B36.10
Flange Size																																																
08	0.50"																																															
12	0.75"																																															
16	1.00"																																															
20	1.25"																																															
24	1.50"																																															
32	2.00"																																															
40	2.50"																																															
48	3.00"																																															
Material																																																
C	Carbon Steel																																															
Product Type																																																
B	Butt Weld Pipe																																															
Seal																																																
G	O-ring Groove																																															
F	Flat Face																																															
Rating Code																																																
1	Code 61 • SAE J518 3.5 - 35 MPa • ISO 6162-1																																															
Pipe Rating																																																
080	Schedule 80 ANSI/ASME B36.10																																															
160	Schedule 160 ANSI/ASME B36.10																																															

# Butt Weld Flange Head

Code 61 • Schedule 80 / 160

CODE 61 BUTT WELD TO FLANGE HEAD FOR SCHED 80							
FLANGE SIZE	PIPE SIZE	A	B	C	D	E	F
0.50	0.50	1.06	.265	1.188	1.000	.548	.840
0.75	0.75	1.06	.265	1.500	1.250	.744	1.050
1.00	1.00	1.25	.315	1.750	1.560	.959	1.315
1.25	1.25	1.44	.315	2.000	1.750	1.280	1.660
1.50	1.50	1.75	.315	2.375	2.115	1.502	1.900
2.00	2.00	2.00	.375	2.812	2.490	1.941	2.375
2.50	2.50	2.31	.375	3.312	2.995	2.325	2.875
3.00	3.00	2.31	.375	4.000	3.615	2.902	3.500

O-ring not included.

CODE 61 BUTT WELD TO FLANGE HEAD FOR SCHED 160							
FLANGE SIZE	PIPE SIZE	A	B	C	D	E	F
0.50	0.50	1.06	.265	1.188	1.000	.464	.840
0.75	0.75	1.06	.265	1.500	1.250	.612	1.050
1.00	1.00	1.25	.315	1.750	1.560	.815	1.315
1.25	1.25	1.44	.315	2.000	1.750	1.160	1.660
1.50	1.50	1.75	.315	2.375	2.115	1.338	1.900
2.00	2.00	2.00	.375	2.812	2.490	1.687	2.375
2.50	2.50	2.31	.375	3.312	2.995	2.125	2.875
3.00	3.00	2.31	.375	4.000	3.615	2.624	3.500

O-ring not included.

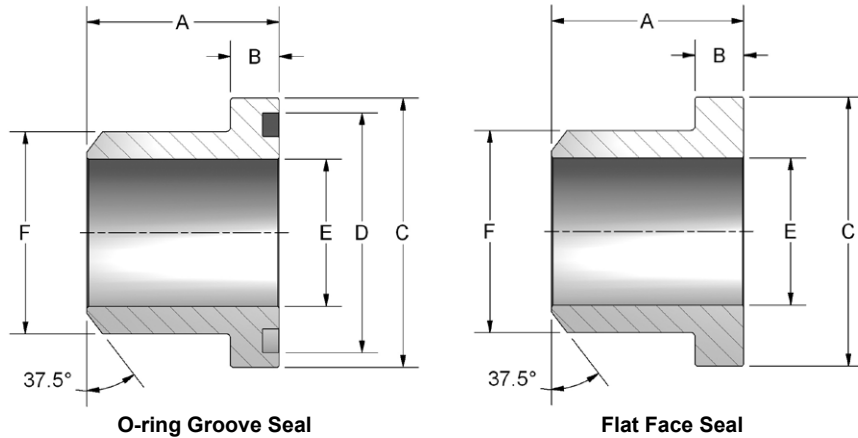
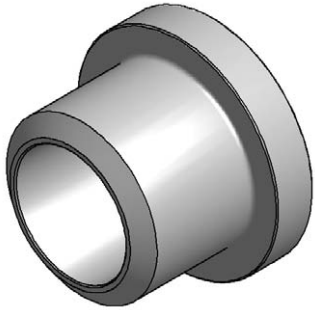
## Pressure Ratings and Fastener Torque Values

CODE 61 SAE J518-1 / ISO 6162-1					
Dash Size	Inch Size	Max Working Pressure		Fastener Torque Value	
		PSI	MPa	Grade 8 UNC (lb-ft)	Grade 10.9 Metric (N-m)
-8	0.50"	5000	35.0	24	32
-12	0.75"	5000	35.0	44	70
-16	1.00"	4600	32.0	44	70
-20	1.25"	4000	28.0	68	70
-24	1.50"	3000	21.0	111	130
-32	2.00"	3000	21.0	111	130
-40	2.50"	2500	17.5	111	130
-48	3.00"	2300	16.0	218	295
-56	3.50"	500	3.5	218	295
-64	4.00"	500	3.5	218	295
-80	5.00"	500	3.5	218	295

Please note that all pressure ratings in this catalog refer to the flange connection. Adapting the flange to other connections, such as braze tube, welded pipe, or threaded ports / stud ends could reduce maximum working pressure.

# Butt Weld Flange Head

Code 62 • Schedule 80 / 160 / XXS



## Ordering Information

FF	Flange Size	Material	Product Type	Seal	Rating Code	Pipe Rating																																
	<table border="1" style="width: 100%; border-collapse: collapse;"> <thead> <tr> <th colspan="2">Flange Size</th> </tr> </thead> <tbody> <tr><td>08</td><td>0.50"</td></tr> <tr><td>12</td><td>0.75"</td></tr> <tr><td>16</td><td>1.00"</td></tr> <tr><td>20</td><td>1.25"</td></tr> <tr><td>24</td><td>1.50"</td></tr> <tr><td>32</td><td>2.00"</td></tr> </tbody> </table>	Flange Size		08	0.50"	12	0.75"	16	1.00"	20	1.25"	24	1.50"	32	2.00"	<table border="1" style="width: 100%; border-collapse: collapse;"> <thead> <tr> <th colspan="2">Material</th> </tr> </thead> <tbody> <tr> <td style="width: 10%; text-align: center;"><b>C</b></td> <td>Carbon Steel</td> </tr> </tbody> </table>	Material		<b>C</b>	Carbon Steel		<table border="1" style="width: 100%; border-collapse: collapse;"> <thead> <tr> <th colspan="2">Seal</th> </tr> </thead> <tbody> <tr> <td style="width: 10%; text-align: center;"><b>G</b></td> <td>O-ring Groove</td> </tr> <tr> <td style="width: 10%; text-align: center;"><b>F</b></td> <td>Flat Face</td> </tr> </tbody> </table>	Seal		<b>G</b>	O-ring Groove	<b>F</b>	Flat Face		<table border="1" style="width: 100%; border-collapse: collapse;"> <thead> <tr> <th colspan="2">Pipe Rating</th> </tr> </thead> <tbody> <tr> <td style="width: 10%; text-align: center;"><b>080</b></td> <td>Schedule 80 ANSI/ASME B36.10</td> </tr> <tr> <td style="width: 10%; text-align: center;"><b>160</b></td> <td>Schedule 160 ANSI/ASME B36.10</td> </tr> <tr> <td style="width: 10%; text-align: center;"><b>XXS</b></td> <td>Schedule XXS ANSI/ASME B36.10</td> </tr> </tbody> </table>	Pipe Rating		<b>080</b>	Schedule 80 ANSI/ASME B36.10	<b>160</b>	Schedule 160 ANSI/ASME B36.10	<b>XXS</b>	Schedule XXS ANSI/ASME B36.10
Flange Size																																						
08	0.50"																																					
12	0.75"																																					
16	1.00"																																					
20	1.25"																																					
24	1.50"																																					
32	2.00"																																					
Material																																						
<b>C</b>	Carbon Steel																																					
Seal																																						
<b>G</b>	O-ring Groove																																					
<b>F</b>	Flat Face																																					
Pipe Rating																																						
<b>080</b>	Schedule 80 ANSI/ASME B36.10																																					
<b>160</b>	Schedule 160 ANSI/ASME B36.10																																					
<b>XXS</b>	Schedule XXS ANSI/ASME B36.10																																					
			<table border="1" style="width: 100%; border-collapse: collapse;"> <thead> <tr> <th colspan="2">Product Type</th> </tr> </thead> <tbody> <tr> <td style="width: 10%; text-align: center;"><b>B</b></td> <td>Butt Weld Pipe</td> </tr> </tbody> </table>	Product Type		<b>B</b>	Butt Weld Pipe		<table border="1" style="width: 100%; border-collapse: collapse;"> <thead> <tr> <th colspan="2">Rating Code</th> </tr> </thead> <tbody> <tr> <td style="width: 10%; text-align: center;"><b>2</b></td> <td>Code 62 • SAE J518 40 MPa • ISO 6162-2</td> </tr> </tbody> </table>	Rating Code		<b>2</b>	Code 62 • SAE J518 40 MPa • ISO 6162-2																									
Product Type																																						
<b>B</b>	Butt Weld Pipe																																					
Rating Code																																						
<b>2</b>	Code 62 • SAE J518 40 MPa • ISO 6162-2																																					

# Butt Weld Flange Head

Code 62 • Schedule 80 / 160 / XXS

### CODE 62 BUTT WELD TO FLANGE HEAD FOR SCHED 80

FLANGE SIZE	PIPE SIZE	A	B	C	D	E	F
0.50	0.50	1.10	.305	1.250	1.000	.548	.840
0.75	0.75	1.42	.345	1.625	1.250	.744	1.050
1.00	1.00	1.61	.375	1.875	1.560	.959	1.315
1.25	1.25	1.73	.405	2.125	1.750	1.280	1.660
1.50	1.50	2.17	.495	2.500	2.115	1.502	1.900
2.00	2.00	2.48	.495	3.125	2.490	1.941	2.375

O-ring not included.

### CODE 62 BUTT WELD TO FLANGE HEAD FOR SCHED 160

FLANGE SIZE	PIPE SIZE	A	B	C	D	E	F
0.50	0.50	1.10	.305	1.250	1.000	.464	.840
0.75	0.75	1.42	.345	1.625	1.250	.612	1.050
1.00	1.00	1.61	.375	1.875	1.560	.815	1.315
1.25	1.25	1.73	.405	2.125	1.750	1.160	1.660
1.50	1.50	2.17	.495	2.500	2.115	1.338	1.900
2.00	2.00	2.48	.495	3.125	2.490	1.687	2.375

O-ring not included.

### CODE 62 BUTT WELD TO FLANGE HEAD FOR SCHED XXS

FLANGE SIZE	PIPE SIZE	A	B	C	D	E	F
0.50	0.50	1.10	.305	1.250	1.000	.252	.840
0.75	0.75	1.42	.345	1.625	1.250	.434	1.050
1.00	1.00	1.61	.375	1.875	1.560	.599	1.315
1.25	1.25	1.73	.405	2.125	1.750	.896	1.660
1.50	1.50	2.17	.495	2.500	2.115	1.100	1.900
2.00	2.00	2.48	.495	3.125	2.490	1.503	2.375

O-ring not included.

### Pressure Ratings and Fastener Torque Values

CODE 62 SAE J518-2 / ISO 6162-2					
Dash Size	Inch Size	Max Working Pressure		Fastener Torque Value	
		PSI	MPa	Grade 8 UNC (lb-ft)	Grade 10.9 Metric (N-m)
-8	0.50"	6000	40.0	24	32
-12	0.75"	6000	40.0	44	70
-16	1.00"	6000	40.0	68	130
-20	1.25"	6000	40.0	111	130
-24	1.50"	6000	40.0	218	295
-32	2.00"	6000	40.0	332	550

Please note that all pressure ratings in this catalog refer to the flange connection. Adapting the flange to other connections, such as braze tube, welded pipe, or threaded ports / stud ends could reduce maximum working pressure.