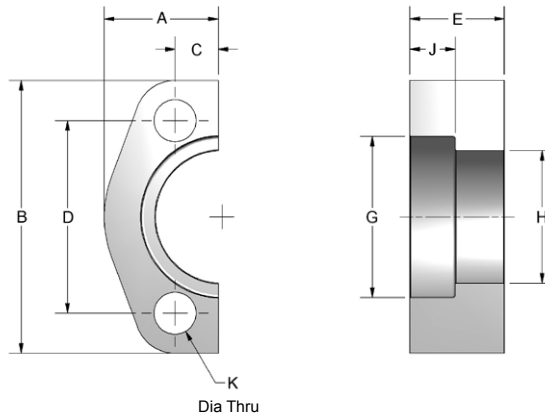
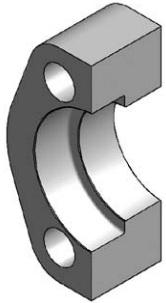


# Split Flange

PTX Series - Fits Caterpillar® flange heads only.



## Ordering Information

FC	Flange Size	Material	Product Type	Rating Code	Mounting																																		
	<table border="1"> <thead> <tr> <th colspan="2">Flange Size</th> </tr> </thead> <tbody> <tr> <td>12</td> <td>0.75"</td> </tr> <tr> <td>16</td> <td>1.00"</td> </tr> <tr> <td>20</td> <td>1.25"</td> </tr> <tr> <td>24</td> <td>1.50"</td> </tr> <tr> <td>32</td> <td>2.00"</td> </tr> </tbody> </table>	Flange Size		12	0.75"	16	1.00"	20	1.25"	24	1.50"	32	2.00"	<table border="1"> <thead> <tr> <th colspan="2">Material</th> </tr> </thead> <tbody> <tr> <td>C</td> <td>Carbon Steel</td> </tr> </tbody> </table>	Material		C	Carbon Steel	<table border="1"> <thead> <tr> <th colspan="2">Product Type</th> </tr> </thead> <tbody> <tr> <td>X</td> <td>Split Flange Caterpillar® PTX</td> </tr> </tbody> </table>	Product Type		X	Split Flange Caterpillar® PTX	<table border="1"> <thead> <tr> <th colspan="2">Rating Code</th> </tr> </thead> <tbody> <tr> <td>2</td> <td>Code 62 • SAE J518 40 MPa • ISO 6162-2</td> </tr> </tbody> </table>	Rating Code		2	Code 62 • SAE J518 40 MPa • ISO 6162-2	<table border="1"> <thead> <tr> <th colspan="2">Mounting</th> </tr> </thead> <tbody> <tr> <td>U</td> <td>UNC mounting kit</td> </tr> <tr> <td>M</td> <td>Metric mounting kit</td> </tr> <tr> <td>X</td> <td>No kit included UNC mounting holes</td> </tr> <tr> <td>Y</td> <td>No kit included Metric mounting holes</td> </tr> </tbody> </table>	Mounting		U	UNC mounting kit	M	Metric mounting kit	X	No kit included UNC mounting holes	Y	No kit included Metric mounting holes
Flange Size																																							
12	0.75"																																						
16	1.00"																																						
20	1.25"																																						
24	1.50"																																						
32	2.00"																																						
Material																																							
C	Carbon Steel																																						
Product Type																																							
X	Split Flange Caterpillar® PTX																																						
Rating Code																																							
2	Code 62 • SAE J518 40 MPa • ISO 6162-2																																						
Mounting																																							
U	UNC mounting kit																																						
M	Metric mounting kit																																						
X	No kit included UNC mounting holes																																						
Y	No kit included Metric mounting holes																																						

# Split Flange

PTX Series - Fits Caterpillar® flange heads only.

SPLIT FLANGE - CATERPILLAR® / PTX												
FLANGE SIZE	A	B	C	D	E	G	H	J	K DIA THRU		MOUNTING HARDWARE HHCS	
									Mounting U or X	Mounting M or Y	Mounting U	Mounting M
0.75	1.210	2.950	.446	2.000	1.102	1.632	1.270	.530	.406	10.5mm	0.375-16x1.75	M10-1.5x45
1.00	1.335	3.190	.507	2.250	1.102	1.884	1.550	.530	.469	12.5mm	0.438-14x1.75	M12-1.75x45
1.25	1.490	3.750	.585	2.625	1.102	2.134	1.705	.530	.531	12.5mm	0.500-13x2.00	M12-1.75x50
1.50	1.335	4.440	.679	3.125	1.258	2.509	2.080	.530	.656	16.5mm	0.625-11x2.50	M16-2.0x65
2.00	2.205	5.240	.834	3.812	1.457	3.130	2.640	.530	.827	21.0mm	0.750-10x2.75	M20-2.5x70

Mounting options ("U" and "M") include: (2) Split Flange halves, (4) hex head screws with washers. **O-RING NOT INCLUDED.**  
 Mounting options ("X" and "Y") include: (1) Split Flange half only.

## Pressure Ratings and Fastener Torque Values

CODE 62 SAE J518-2 / ISO 6162-2					
Dash Size	Inch Size	Max Working Pressure		Fastener Torque Value	
		PSI	MPa	Grade 8 UNC (lb-ft)	Grade 10.9 Metric (N-m)
-8	0.50"	6000	40.0	24	32
-12	0.75"	6000	40.0	44	70
-16	1.00"	6000	40.0	68	130
-20	1.25"	6000	40.0	111	130
-24	1.50"	6000	40.0	218	295
-32	2.00"	6000	40.0	332	550

Please note that all pressure ratings in this catalog refer to the flange connection. Adapting the flange to other connections, such as braze tube, welded pipe, or threaded ports / stud ends could reduce maximum working pressure.