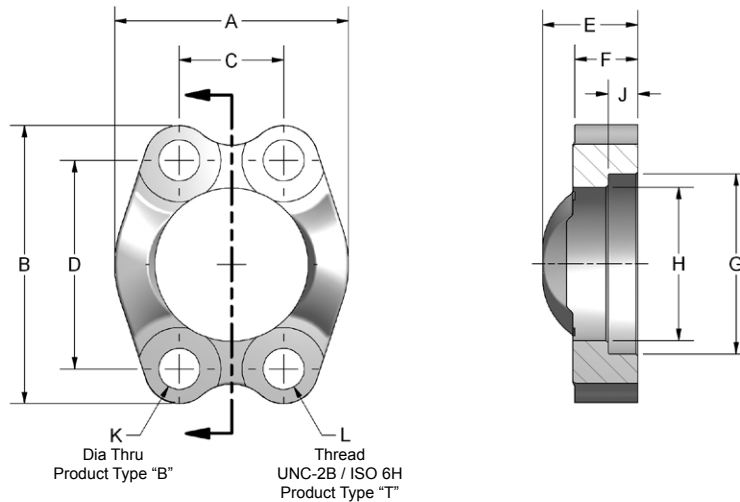


# Captive Flange



## Ordering Information

FC	Flange Size	Material	Product Type	Rating Code	Mounting																																																										
	<table border="1"> <thead> <tr> <th colspan="2">Flange Size</th> </tr> </thead> <tbody> <tr> <td colspan="2">Rating code 1 or 2</td> </tr> <tr> <td>08</td> <td>0.50"</td> </tr> <tr> <td>12</td> <td>0.75"</td> </tr> <tr> <td>16</td> <td>1.00"</td> </tr> <tr> <td>20</td> <td>1.25"</td> </tr> <tr> <td>24</td> <td>1.50"</td> </tr> <tr> <td>32</td> <td>2.00"</td> </tr> <tr> <td colspan="2">Rating code 1 only</td> </tr> <tr> <td>40</td> <td>2.50"</td> </tr> <tr> <td>48</td> <td>3.00"</td> </tr> <tr> <td>56</td> <td>3.50"</td> </tr> <tr> <td>64</td> <td>4.00"</td> </tr> </tbody> </table>	Flange Size		Rating code 1 or 2		08	0.50"	12	0.75"	16	1.00"	20	1.25"	24	1.50"	32	2.00"	Rating code 1 only		40	2.50"	48	3.00"	56	3.50"	64	4.00"	<table border="1"> <thead> <tr> <th colspan="2">Material</th> </tr> </thead> <tbody> <tr> <td>C</td> <td>Carbon Steel</td> </tr> <tr> <td>S</td> <td>Stainless Steel</td> </tr> </tbody> </table>	Material		C	Carbon Steel	S	Stainless Steel	<table border="1"> <thead> <tr> <th colspan="2">Product Type</th> </tr> </thead> <tbody> <tr> <td>T</td> <td>Captive Flange Threaded Holes</td> </tr> <tr> <td>B</td> <td>Captive Flange Bolt Holes</td> </tr> </tbody> </table>	Product Type		T	Captive Flange Threaded Holes	B	Captive Flange Bolt Holes	<table border="1"> <thead> <tr> <th colspan="2">Rating Code</th> </tr> </thead> <tbody> <tr> <td>1</td> <td>Code 61 • SAE J518 3.5 - 35 MPa • ISO 6162-1</td> </tr> <tr> <td>2</td> <td>Code 62 • SAE J518 40 MPa • ISO 6162-2</td> </tr> </tbody> </table>	Rating Code		1	Code 61 • SAE J518 3.5 - 35 MPa • ISO 6162-1	2	Code 62 • SAE J518 40 MPa • ISO 6162-2	<table border="1"> <thead> <tr> <th colspan="2">Mounting</th> </tr> </thead> <tbody> <tr> <td colspan="2">Product Type B only</td> </tr> <tr> <td>U</td> <td>UNC mounting kit</td> </tr> <tr> <td>M</td> <td>Metric mounting kit</td> </tr> <tr> <td colspan="2">Product Type B or T</td> </tr> <tr> <td>X</td> <td>No kit included UNC mounting holes</td> </tr> <tr> <td>Y</td> <td>No kit included Metric mounting holes</td> </tr> </tbody> </table>	Mounting		Product Type B only		U	UNC mounting kit	M	Metric mounting kit	Product Type B or T		X	No kit included UNC mounting holes	Y	No kit included Metric mounting holes
Flange Size																																																															
Rating code 1 or 2																																																															
08	0.50"																																																														
12	0.75"																																																														
16	1.00"																																																														
20	1.25"																																																														
24	1.50"																																																														
32	2.00"																																																														
Rating code 1 only																																																															
40	2.50"																																																														
48	3.00"																																																														
56	3.50"																																																														
64	4.00"																																																														
Material																																																															
C	Carbon Steel																																																														
S	Stainless Steel																																																														
Product Type																																																															
T	Captive Flange Threaded Holes																																																														
B	Captive Flange Bolt Holes																																																														
Rating Code																																																															
1	Code 61 • SAE J518 3.5 - 35 MPa • ISO 6162-1																																																														
2	Code 62 • SAE J518 40 MPa • ISO 6162-2																																																														
Mounting																																																															
Product Type B only																																																															
U	UNC mounting kit																																																														
M	Metric mounting kit																																																														
Product Type B or T																																																															
X	No kit included UNC mounting holes																																																														
Y	No kit included Metric mounting holes																																																														

# Captive Flange

CODE 61 CAPTIVE FLANGE																
FLANGE SIZE	A	B	C	D	E	F	G	H	J	K DIA THRU		L THREAD		MOUNTING HARDWARE HHCS		
										Mounting U or X	Mounting M or Y	UNC-2B U or X	ISO 6H M or Y	O-RING	Mounting U	Mounting M
0.50	1.81	2.12	.688	1.500	.75	.50	1.219	.955	.245	.344	8.5mm	0.313-18	M8-1.25	210	0.313-18x1.25	M8-1.25x30
0.75	2.06	2.56	.875	1.875	.88	.56	1.531	1.265	.245	.406	10.5mm	0.375-16	M10-1.5	214	0.375-16x1.25	M10-1.5x30
1.00	2.31	2.75	1.031	2.062	.94	.62	1.781	1.515	.295	.406	10.5mm	0.375-16	M10-1.5	219	0.375-16x1.25	M10-1.5x30
1.25	2.88	3.12	1.188	2.312	.88	.56	2.031	1.720	.295	.469	10.5mm	0.438-14	M10-1.5	222	0.438-14x1.50	M10-1.5x40
1.50	3.25	3.69	1.406	2.750	1.00	.62	2.406	2.000	.295	.531	12.5mm	0.500-13	M12-1.75	225	0.500-13x1.50	M12-1.75x40
2.00	3.81	4.00	1.688	3.062	1.03	.62	2.844	2.470	.355	.531	12.5mm	0.500-13	M12-1.75	228	0.500-13x1.50	M12-1.75x40
2.50	4.28	4.50	2.000	3.500	1.50	.75	3.344	2.950	.355	.531	12.5mm	0.500-13	M12-1.75	232	0.500-13x1.75	M12-1.75x45
3.00	5.16	5.31	2.438	4.188	1.62	.88	4.031	3.580	.355	.656	16.5mm	0.625-11	M16-2.0	237	0.625-11x1.75	M16-2.0x45
3.50	5.50	6.00	2.750	4.750	1.12	.88	4.531	4.030	.422	.656	16.5mm	0.625-11	M16-2.0	241	0.625-11x2.00	M16-2.0x50
4.00	6.00	6.38	3.062	5.125	1.38	1.00	5.031	4.530	.422	.656	16.5mm	0.625-11	M16-2.0	245	0.625-11x2.00	M16-2.0x50

Captive flanges have natural finish.

CODE 62 CAPTIVE FLANGE																
FLANGE SIZE	A	B	C	D	E	F	G	H	J	K DIA THRU		L THREAD		MOUNTING HARDWARE HHCS		
										Mounting U or X	Mounting M or Y	UNC-2B U or X	ISO 6H M or Y	O-RING	Mounting U	Mounting M
0.50	1.86	2.22	.718	1.594	.88	.62	1.281	.970	.285	.344	8.5mm	0.313-18	M8-1.25	210	0.313-18x1.25	M8-1.25x30
0.75	2.38	2.81	.937	2.000	1.12	.75	1.656	1.280	.325	.406	10.5mm	0.375-16	M10-1.5	214	0.375-16x1.50	M10-1.5x40
1.00	2.75	3.19	1.093	2.250	1.31	.94	1.906	1.530	.355	.469	12.5mm	0.438-14	M12-1.75	219	0.438-14x1.75	M12-1.75x45
1.25	3.06	3.75	1.250	2.625	1.50	1.06	2.156	1.750	.385	.531	12.5mm	0.500-13	M12-1.75	222	0.500-13x1.75	M12-1.75x45
1.50	3.75	4.44	1.437	3.125	1.69	1.19	2.531	2.030	.475	.656	16.5mm	0.625-11	M16-2.0	225	0.625-11x2.25	M16-2.0x50
2.00	4.50	5.25	1.750	3.812	2.06	1.44	3.156	2.660	.475	.781	21.0mm	0.750-10	M20-2.5	228	0.750-10x2.75	M20-2.5x65

Captive flanges have natural finish.

## Pressure Ratings and Fastener Torque Values

CODE 61 SAE J518-1 / ISO 6162-1						
Dash Size	Inch Size	Max Working Pressure		Fastener Torque Value		
		PSI	MPa	Grade 8 UNC (lb-ft)	Grade 10.9 Metric (N-m)	
-8	0.50"	5000	35.0	24	32	
-12	0.75"	5000	35.0	44	70	
-16	1.00"	4600	32.0	44	70	
-20	1.25"	4000	28.0	68	70	
-24	1.50"	3000	21.0	111	130	
-32	2.00"	3000	21.0	111	130	
-40	2.50"	2500	17.5	111	130	
-48	3.00"	2300	16.0	218	295	
-56	3.50"	500	3.5	218	295	
-64	4.00"	500	3.5	218	295	
-80	5.00"	500	3.5	218	295	

CODE 62 SAE J518-2 / ISO 6162-2						
Dash Size	Inch Size	Max Working Pressure		Fastener Torque Value		
		PSI	MPa	Grade 8 UNC (lb-ft)	Grade 10.9 Metric (N-m)	
-8	0.50"	6000	40.0	24	32	
-12	0.75"	6000	40.0	44	70	
-16	1.00"	6000	40.0	68	130	
-20	1.25"	6000	40.0	111	130	
-24	1.50"	6000	40.0	218	295	
-32	2.00"	6000	40.0	332	550	

Please note that all pressure ratings in this catalog refer to the flange connection. Adapting the flange to other connections, such as braze tube, welded pipe, or threaded ports / stud ends could reduce maximum working pressure.