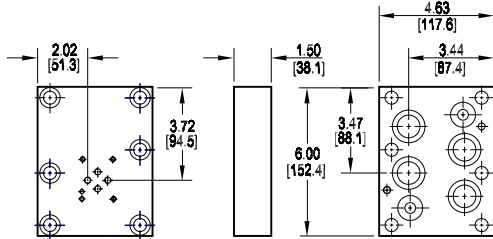
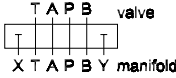


Valve Adaptors for D08 Manifolds

Adapt D03 valve to D08 manifold

Valve mtg: UNC #10-24 x 0.50 DP or
Metric M5-0.8mm ISO 6H x [12.7] DP

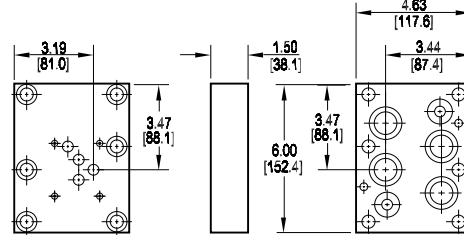
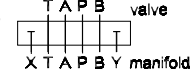
Adaptor mounting hardware is supplied.
See page 99 for itemized list.



Adapt D05 valve to D08 manifold

Valve mtg: UNC 0.25-20 x 0.50 DP or
Metric M6-1.0mm ISO 6H x [12.7] DP

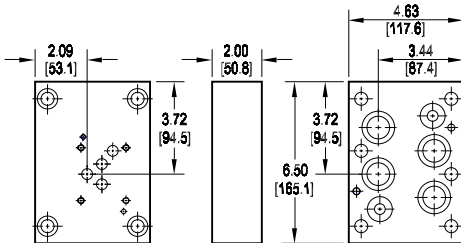
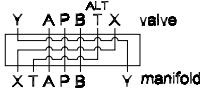
Adaptor mounting hardware is supplied.
See page 99 for itemized list.



Adapt D05H valve to D08 manifold

Valve mtg: UNC 0.25-20 x 0.75 DP or
Metric M6-1.0mm ISO 6H x [19.1] DP

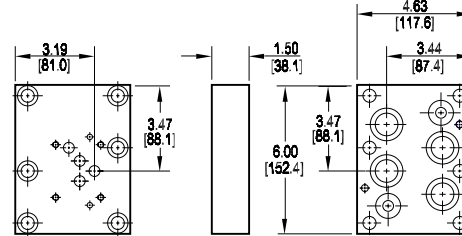
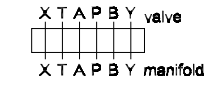
Adaptor mounting hardware is supplied.
See page 99 for itemized list.



Adapt D05HE valve to D08 manifold

Valve mtg: 0.25-20 UNC x 0.50 DP or
Metric M6-1.0mm ISO 6H x [12.7] DP

Adaptor mounting hardware is supplied.
See page 99 for itemized list.



Specifications, descriptions, and dimensional data are subject to correction or change without notice or incurring obligation. Download latest catalog page revisions at www.damanifolds.com.

Ordering Information

| Material | Valve Pattern | Manifold Pattern | Product Type | Port Orientation | Bolt Threads |
|----------|---------------|------------------|--------------|------------------|--------------|
|----------|---------------|------------------|--------------|------------------|--------------|

| Material | |
|---|--|
| A | Aluminum - 6061-T6 3000† psi • 20.7 MPa |
| D | Ductile Iron - D4512 5000† psi • 34.5 MPa |
| † Working pressure should be considered in accordance with ISO 4413 to determine appropriate material type. | |

| Manifold Pattern | |
|------------------|--|
| D08 | ISO 4401-08-07 NFFPA T3.5.1-D08 See Tech Information |

| Port Orientation | |
|------------------|--|
| AB | A _v common to A _m B _v common to B _m |

| Valve Pattern | |
|----------------------|--|
| See Tech Information | |
| D03 | ISO 4401-03-02 NFFPA T3.5.1-D03 |
| D05 | ISO 4401-05-04 NFFPA T3.5.1-D05 |
| D05H | (USA std) NFFPA T3.5.1-D05 Alt B |
| D05HE | ISO 4401-05-05 NFFPA T3.5.1-D05 Alt A |

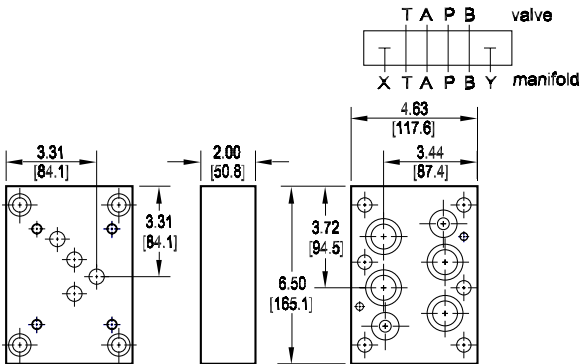
| Product Type | |
|--------------|---------------|
| VA | Valve Adaptor |

| Bolt Threads | |
|-------------------------------|--------------------------|
| Omit for inch (UNC) bolt kit. | |
| M | Metric (ISO 6H) bolt kit |

Valve Adaptors for D08 Manifolds

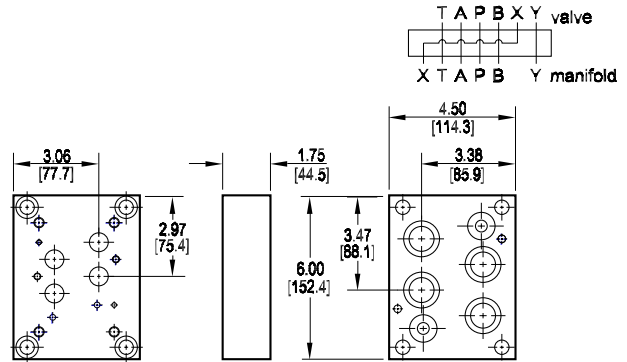
Adapt D06 valve to D08 manifold

Valve mtg: UNC 0.38-16 x 0.75 DP or
Metric M10-1.5mm ISO 6H x [19.1] DP
Adaptor mounting hardware is supplied.
See page 99 for itemized list.



Adapt D07 valve to D08 manifold

Valve mtg: UNC 0.38-16 x 0.75 DP or
Metric M10-1.5mm ISO 6H x [19.1] DP
Adaptor mounting hardware is supplied.
See page 99 for itemized list.



Specifications, descriptions, and dimensional data are subject to correction or change without notice or incurring obligation. Download latest catalog page revisions at www.damanifolds.com.

Ordering Information

| Material | Valve Pattern | Manifold Pattern | Product Type | Port Orientation | Bolt Threads |
|----------|---------------|------------------|--------------|------------------|--------------|
|----------|---------------|------------------|--------------|------------------|--------------|

| Material | |
|----------|--|
| A | Aluminum - 6061-T6 3000† psi • 20.7 MPa |
| D | Ductile Iron - D4512 5000† psi • 34.5 MPa |

† Working pressure should be considered in accordance with ISO 4413 to determine appropriate material type.

| Manifold Pattern | |
|------------------|---|
| D08 | ISO 4401-08-07 NFPA T3.5.1-D08 See Tech Information |

| Port Orientation | |
|------------------|--|
| AB | A _V common to A _M B _V common to B _M |

| Product Type | |
|--------------|---------------|
| VA | Valve Adaptor |

| Bolt Threads | |
|-------------------------------|--------------------------|
| Omit for inch (UNC) bolt kit. | |
| M | Metric (ISO 6H) bolt kit |

| Valve Pattern | |
|---------------|---|
| D06 | NFPA T3.5.1-D06 See Tech Information |
| D07 | ISO 4401-07-06 NFPA T3.5.1-D07 See Tech Information |