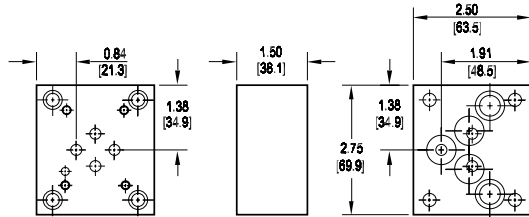
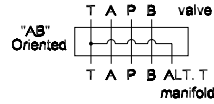


# Valve Adaptors for D05 Manifolds

## Adapt D03 valve to D05 manifold • AB oriented

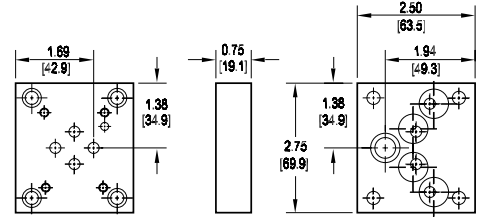
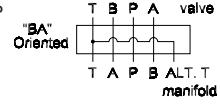
Valve mtg: UNC #10-24 x 0.50 DP or  
Metric M5-0.8mm ISO 6H x [12.7] DP  
Adaptor mounting hardware is supplied.  
See page 98 for itemized list.



This adaptor permits the installation of a D03 valve on a D05 manifold. This adaptor, unlike \*D03D05VABA\*, properly orients the A & B ports on the manifold to the respective valve solenoids.

## Adapt D03 valve to D05 manifold • BA oriented

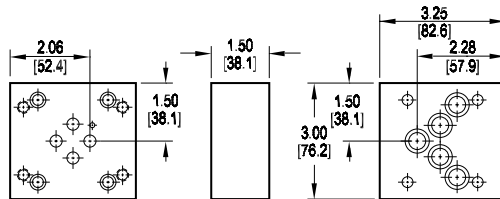
Valve mtg: UNC #10-24 x 0.44 DP or  
Metric M5 x 0.8mm ISO 6H x [11] DP  
Adaptor mounting hardware is supplied.  
See page 98 for itemized list.



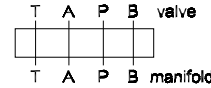
This adaptor permits the installation of a D03 valve on a D05 manifold. This adaptor, while low in cost, does not orient the A & B ports on the manifold to the respective valve solenoids.

## Adapt S04 valve to D05 manifold • AB oriented

Valve mtg: UNC 0.31-18 x 0.63 DP or  
Metric M8 x 1.25mm ISO 6H x [15.9] DP  
Adaptor mounting hardware is supplied.  
See page 98 for itemized list.



This adaptor properly orients the A & B ports on the manifold to the respective valve solenoids.



Specifications, descriptions, and dimensional data are subject to correction or change without notice or incurring obligation. Download latest catalog page revisions at [www.damanifolds.com](http://www.damanifolds.com).

# Ordering Information

Material	Valve Pattern	Manifold Pattern	Product Type	Port Orientation	Bolt Threads
----------	---------------	------------------	--------------	------------------	--------------

Material	
<b>A</b>	Aluminum - 6061-T6 3000† psi • 20.7 MPa
<b>D</b>	Ductile Iron - D4512 5000† psi • 34.5 MPa
† Working pressure should be considered in accordance with ISO 4413 to determine appropriate material type.	

Manifold Pattern	
<b>D05</b>	ISO 4401-05-04 NFFPA T3.5.1-D05 See Tech Information

Port Orientation	
<b>AB</b>	A <sub>v</sub> common to A <sub>m</sub> B <sub>v</sub> common to B <sub>m</sub>
<b>BA</b>	B <sub>v</sub> common to A <sub>m</sub> A <sub>v</sub> common to B <sub>m</sub> D03 valve pattern only.

Valve Pattern	
<b>D03</b>	ISO 4401-03-02 NFFPA T3.5.1-D03 See Tech Information
<b>S04</b>	ISO 10372-04-04 Daman standard S04 See Tech Information

Product Type	
<b>VA</b>	Valve Adaptor

Bolt Threads	
Omit for inch (UNC) bolt kit.	
<b>M</b>	Metric (ISO 6H) bolt kit