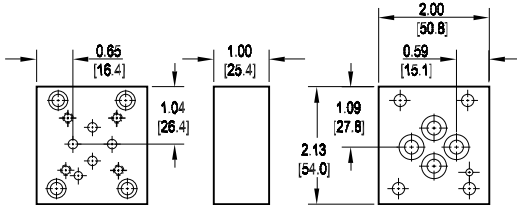
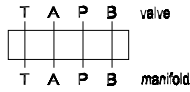


# Valve Adaptors for D03 Manifolds

## Adapt D02 valve to D03 manifold

Valve mtg: UNC #10-24 x 0.50 DP or  
Metric M5-0.8mm ISO 6H x [12.7] DP

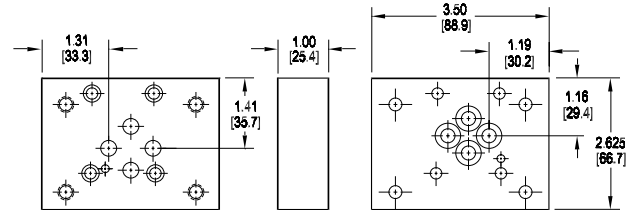
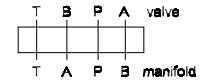
Adaptor mounting hardware is supplied.  
See page 98 for itemized list.



## Adapt S04 valve to D03 manifold • BA oriented

Valve mtg: UNC 0.31-18 x 0.88 DP or  
Metric M8 x 1.25mm ISO 6H x [22.2] DP

Adaptor mounting hardware is supplied.  
See page 98 for itemized list.

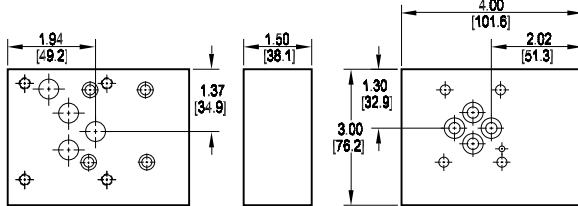
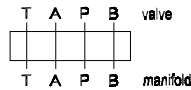


This adaptor does not orient the A & B ports on the manifold to the respective valve solenoids.

## Adapt D05 valve to D03 manifold • style A

Valve mtg: UNC 0.25-20 x 0.50 DP or  
Metric M6-1.0mm ISO 6H x [12.7] DP

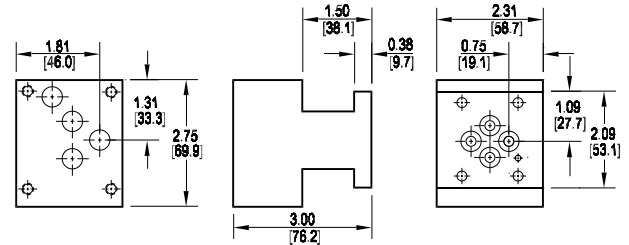
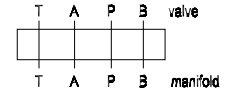
Adaptor mounting hardware is supplied.  
See page 98 for itemized list.



## Adapt D05 valve to D03 manifold • style B

Valve mtg: UNC 0.25-20 x 0.75 DP or  
Metric M6-1.0mm ISO 6H x [19.1] DP

Adaptor mounting hardware is supplied.  
See page 98 for itemized list.



Specifications, descriptions, and dimensional data are subject to correction or change without notice or incurring obligation.  
Download latest catalog page revisions at [www.damanifolds.com](http://www.damanifolds.com).

# Ordering Information

Material	Valve Pattern	Manifold Pattern	Product Type	Port Orientation	Style	Bolt Threads
----------	---------------	------------------	--------------	------------------	-------	--------------

Material	
<b>A</b>	Aluminum - 6061-T6 3000† psi • 20.7 MPa
<b>D</b>	Ductile Iron - D4512 5000† psi • 34.5 MPa

† Working pressure should be considered in accordance with ISO 4413 to determine appropriate material type.

Manifold Pattern	
<b>D03</b>	ISO 4401-03-02 NFPA T3.5.1-D03 See Tech Information

Valve Pattern	
<b>D02</b>	ISO 4401-02-01 NFPA T3.5.1-D02 See Tech Information
<b>D05</b>	ISO 4401-05-04 NFPA T3.5.1-D05 See Tech Information
<b>S04</b>	ISO 10372-04-04 Daman standard S04 See Tech Information

Product Type	
<b>VA</b>	Valve Adaptor

Port Orientation	
<b>AB</b>	A <sub>v</sub> common to A <sub>m</sub> B <sub>v</sub> common to B <sub>m</sub>
<b>BA</b>	A <sub>v</sub> common to B <sub>m</sub> B <sub>v</sub> common to A <sub>m</sub> S04 valve pattern only.

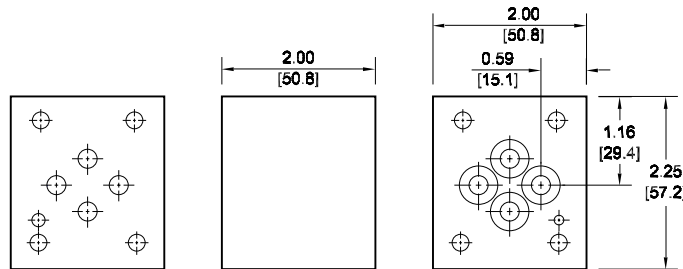
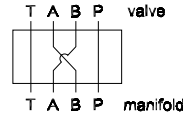
Bolt Threads	
	Omit for inch (UNC) bolt kit.
<b>M</b>	Metric (ISO 6H) bolt kit

D05-D03 Style	
	Required with D05 valve pattern. Omit with D02 or S04 patterns.
<b>A</b>	Style A Low height, wide design
<b>B</b>	Style B Tall height, narrow design

# Valve Adaptors for D03 Manifolds

## D03 A & B Port Swap Block • (BA oriented)

Adaptor hardware / interface seal kit is supplied. See page 98 for itemized list.



Specifications, descriptions, and dimensional data are subject to correction or change without notice or incurring obligation. Download latest catalog page revisions at [www.damanifolds.com](http://www.damanifolds.com).

## Ordering Information

Material	Valve Pattern	Manifold Pattern	Product Type	Port Orientation	Bolt Threads																														
<table border="1"> <thead> <tr> <th colspan="2">Material</th> </tr> </thead> <tbody> <tr> <td><b>A</b></td> <td>Aluminum - 6061-T6 3000† psi • 20.7 MPa</td> </tr> <tr> <td><b>D</b></td> <td>Ductile Iron - D4512 5000† psi • 34.5 MPa</td> </tr> <tr> <td colspan="2">† Working pressure should be considered in accordance with ISO 4413 to determine appropriate material type.</td> </tr> </tbody> </table>	Material		<b>A</b>	Aluminum - 6061-T6 3000† psi • 20.7 MPa	<b>D</b>	Ductile Iron - D4512 5000† psi • 34.5 MPa	† Working pressure should be considered in accordance with ISO 4413 to determine appropriate material type.		<table border="1"> <thead> <tr> <th colspan="2">Valve Pattern</th> </tr> </thead> <tbody> <tr> <td><b>D03</b></td> <td>ISO 4401-03-02 NFPA T3.5.1-D03 See Tech Information</td> </tr> </tbody> </table>	Valve Pattern		<b>D03</b>	ISO 4401-03-02 NFPA T3.5.1-D03 See Tech Information	<table border="1"> <thead> <tr> <th colspan="2">Manifold Pattern</th> </tr> </thead> <tbody> <tr> <td><b>D03</b></td> <td>ISO 4401-03-02 NFPA T3.5.1-D03 See Tech Information</td> </tr> </tbody> </table>	Manifold Pattern		<b>D03</b>	ISO 4401-03-02 NFPA T3.5.1-D03 See Tech Information	<table border="1"> <thead> <tr> <th colspan="2">Product Type</th> </tr> </thead> <tbody> <tr> <td><b>VA</b></td> <td>Valve Adaptor</td> </tr> </tbody> </table>	Product Type		<b>VA</b>	Valve Adaptor	<table border="1"> <thead> <tr> <th colspan="2">Port Orientation</th> </tr> </thead> <tbody> <tr> <td><b>BA</b></td> <td>B<sub>V</sub> common to A<sub>m</sub> A<sub>V</sub> common to B<sub>m</sub> D03 valve pattern only.</td> </tr> </tbody> </table>	Port Orientation		<b>BA</b>	B <sub>V</sub> common to A <sub>m</sub> A <sub>V</sub> common to B <sub>m</sub> D03 valve pattern only.	<table border="1"> <thead> <tr> <th colspan="2">Bolt Threads</th> </tr> </thead> <tbody> <tr> <td><b>Omit</b></td> <td>Mounting holes sized for inch (UNC) bolts.</td> </tr> <tr> <td><b>M</b></td> <td>Mounting holes sized for Metric (ISO 6H) bolts.</td> </tr> </tbody> </table>	Bolt Threads		<b>Omit</b>	Mounting holes sized for inch (UNC) bolts.	<b>M</b>	Mounting holes sized for Metric (ISO 6H) bolts.
Material																																			
<b>A</b>	Aluminum - 6061-T6 3000† psi • 20.7 MPa																																		
<b>D</b>	Ductile Iron - D4512 5000† psi • 34.5 MPa																																		
† Working pressure should be considered in accordance with ISO 4413 to determine appropriate material type.																																			
Valve Pattern																																			
<b>D03</b>	ISO 4401-03-02 NFPA T3.5.1-D03 See Tech Information																																		
Manifold Pattern																																			
<b>D03</b>	ISO 4401-03-02 NFPA T3.5.1-D03 See Tech Information																																		
Product Type																																			
<b>VA</b>	Valve Adaptor																																		
Port Orientation																																			
<b>BA</b>	B <sub>V</sub> common to A <sub>m</sub> A <sub>V</sub> common to B <sub>m</sub> D03 valve pattern only.																																		
Bolt Threads																																			
<b>Omit</b>	Mounting holes sized for inch (UNC) bolts.																																		
<b>M</b>	Mounting holes sized for Metric (ISO 6H) bolts.																																		