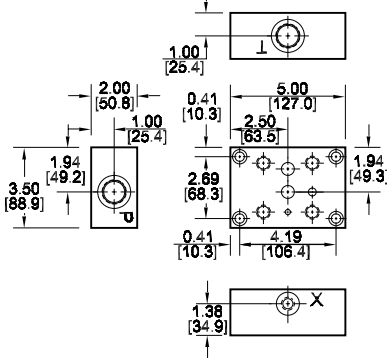


# R06, R08, I08, R10, I10 Relief Valve Subplates

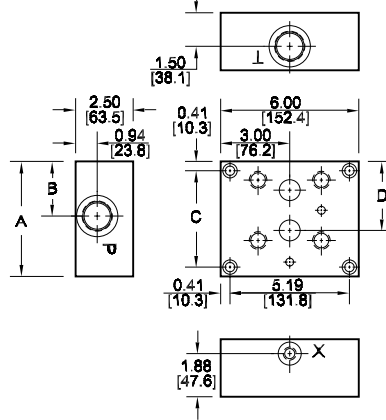
## R06 (I06) Side Ported Subplate

Valve mtg: UNC 0.50-13 x 1.00 [25] DP  
 X Port: 0.38-18 NPTF or -6 SAE.  
 Subplate hardware kit is supplied.  
 See page 123 for itemized list.



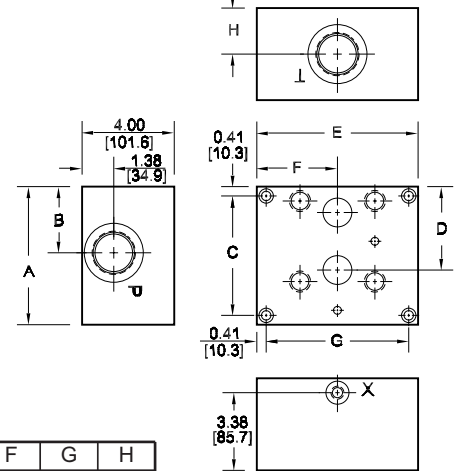
## R08, I08 Side Ported Subplate

Valve mtg: UNC 0.63-11 x 1.44 [36] DP  
 X Port: 0.38-18 NPTF or -6 SAE.  
 Subplate hardware kit is supplied.  
 See page 123 for itemized list.



## R10, I10 Side Ported Subplate

Valve mtg: UNC 0.75-10 x 1.63 [41] DP  
 X Port: 0.38-18 NPTF or -6 SAE.  
 Subplate hardware kit is supplied.  
 See page 123 for itemized list.



Dimension	A	B	C	D	E	F	G	H
*R08SPS12*	5.00	2.38	4.19	3.00	--	--	--	--
*R08SPS16*	[127.0]	[60.3]	[106.4]	[76.2]	--	--	--	--
*I08SPS12*	4.50	2.44	3.69	2.75	--	--	--	--
*I08SPS16*	[114.3]	[61.9]	[93.7]	[69.9]	--	--	--	--
*R10SPS20*	6.00	2.88	5.19	3.63	7.00	3.50	6.19	2.00
*R10SPS24*	[152.4]	[73.0]	[131.8]	[92.1]	[177.8]	[88.9]	[157.2]	[50.8]
*I10SPS20*	5.00	2.38	4.19	3.06	7.38	3.69	6.56	2.63
*I10SPS24*	[127.0]	[60.3]	[106.4]	[77.8]	[187.3]	[93.7]	[166.7]	[66.7]

Specifications, descriptions, and dimensional data are subject to correction or change without notice or incurring obligation.  
 Download latest catalog page revisions at [www.damanifolds.com](http://www.damanifolds.com).

## Ordering Information

Material	Valve Pattern	Product Type	Port Location	Port Threads																																																																				
<table border="1"> <thead> <tr> <th colspan="2">Material</th> </tr> </thead> <tbody> <tr> <td><b>A</b></td> <td>Aluminum - 6061-T6 3000† psi • 20.7 MPa</td> </tr> <tr> <td><b>D</b></td> <td>Ductile Iron - D4512 5000† psi • 34.5 MPa</td> </tr> <tr> <td colspan="2">† Working pressure should be considered in accordance with ISO 4413 to determine appropriate material type.</td> </tr> </tbody> </table>	Material		<b>A</b>	Aluminum - 6061-T6 3000† psi • 20.7 MPa	<b>D</b>	Ductile Iron - D4512 5000† psi • 34.5 MPa	† Working pressure should be considered in accordance with ISO 4413 to determine appropriate material type.		<table border="1"> <thead> <tr> <th colspan="2">Valve Pattern</th> </tr> </thead> <tbody> <tr> <td><b>R06</b></td> <td>ISO 6264-06-09 NFFPA T3.5.1-R06 See Tech Information</td> </tr> <tr> <td><b>R08</b></td> <td>ISO 6264-08-13 NFFPA T3.5.1-R08 See Tech Information</td> </tr> <tr> <td><b>I08</b></td> <td>NFFPA T3.5.1-RV08 See Tech Information</td> </tr> <tr> <td><b>R10</b></td> <td>ISO 6264-10-17 NFFPA T3.5.1-R10 See Tech Information</td> </tr> <tr> <td><b>I10</b></td> <td>NFFPA T3.5.1-RV10 See Tech Information</td> </tr> </tbody> </table>	Valve Pattern		<b>R06</b>	ISO 6264-06-09 NFFPA T3.5.1-R06 See Tech Information	<b>R08</b>	ISO 6264-08-13 NFFPA T3.5.1-R08 See Tech Information	<b>I08</b>	NFFPA T3.5.1-RV08 See Tech Information	<b>R10</b>	ISO 6264-10-17 NFFPA T3.5.1-R10 See Tech Information	<b>I10</b>	NFFPA T3.5.1-RV10 See Tech Information	<table border="1"> <thead> <tr> <th colspan="2">Product Type</th> </tr> </thead> <tbody> <tr> <td><b>SP</b></td> <td>Subplate</td> </tr> </tbody> </table>	Product Type		<b>SP</b>	Subplate	<table border="1"> <thead> <tr> <th colspan="2">Port Location</th> </tr> </thead> <tbody> <tr> <td><b>S</b></td> <td>Side ported</td> </tr> </tbody> </table>	Port Location		<b>S</b>	Side ported	<table border="1"> <thead> <tr> <th colspan="4">Port Threads</th> </tr> </thead> <tbody> <tr> <td colspan="4" style="text-align: center;"><b>R06 only</b></td> </tr> <tr> <td><b>08P</b></td> <td>0.50-14 NPTF ANSI B1.20.3</td> <td><b>08S</b></td> <td>-8 SAE ISO 11926; SAE 1926</td> </tr> <tr> <td colspan="4" style="text-align: center;"><b>R06, R08, or I08</b></td> </tr> <tr> <td><b>12P</b></td> <td>0.75-14 NPTF ANSI B1.20.3</td> <td><b>12S</b></td> <td>-12 SAE ISO 11926; SAE 1926</td> </tr> <tr> <td colspan="4" style="text-align: center;"><b>R08 or I08</b></td> </tr> <tr> <td><b>16P</b></td> <td>1.00-11.5 NPTF ANSI B1.20.3</td> <td><b>16S</b></td> <td>-16 SAE ISO 11926; SAE 1926</td> </tr> <tr> <td colspan="4" style="text-align: center;"><b>R10 or I10</b></td> </tr> <tr> <td><b>20P</b></td> <td>1.25-11.5 NPTF ANSI B1.20.3</td> <td><b>20S</b></td> <td>-20 SAE ISO 11926; SAE 1926</td> </tr> <tr> <td><b>24P</b></td> <td>1.50-11.5 NPTF ANSI B1.20.3</td> <td><b>24S</b></td> <td>-24 SAE ISO 11926; SAE 1926</td> </tr> </tbody> </table>	Port Threads				<b>R06 only</b>				<b>08P</b>	0.50-14 NPTF ANSI B1.20.3	<b>08S</b>	-8 SAE ISO 11926; SAE 1926	<b>R06, R08, or I08</b>				<b>12P</b>	0.75-14 NPTF ANSI B1.20.3	<b>12S</b>	-12 SAE ISO 11926; SAE 1926	<b>R08 or I08</b>				<b>16P</b>	1.00-11.5 NPTF ANSI B1.20.3	<b>16S</b>	-16 SAE ISO 11926; SAE 1926	<b>R10 or I10</b>				<b>20P</b>	1.25-11.5 NPTF ANSI B1.20.3	<b>20S</b>	-20 SAE ISO 11926; SAE 1926	<b>24P</b>	1.50-11.5 NPTF ANSI B1.20.3	<b>24S</b>	-24 SAE ISO 11926; SAE 1926
Material																																																																								
<b>A</b>	Aluminum - 6061-T6 3000† psi • 20.7 MPa																																																																							
<b>D</b>	Ductile Iron - D4512 5000† psi • 34.5 MPa																																																																							
† Working pressure should be considered in accordance with ISO 4413 to determine appropriate material type.																																																																								
Valve Pattern																																																																								
<b>R06</b>	ISO 6264-06-09 NFFPA T3.5.1-R06 See Tech Information																																																																							
<b>R08</b>	ISO 6264-08-13 NFFPA T3.5.1-R08 See Tech Information																																																																							
<b>I08</b>	NFFPA T3.5.1-RV08 See Tech Information																																																																							
<b>R10</b>	ISO 6264-10-17 NFFPA T3.5.1-R10 See Tech Information																																																																							
<b>I10</b>	NFFPA T3.5.1-RV10 See Tech Information																																																																							
Product Type																																																																								
<b>SP</b>	Subplate																																																																							
Port Location																																																																								
<b>S</b>	Side ported																																																																							
Port Threads																																																																								
<b>R06 only</b>																																																																								
<b>08P</b>	0.50-14 NPTF ANSI B1.20.3	<b>08S</b>	-8 SAE ISO 11926; SAE 1926																																																																					
<b>R06, R08, or I08</b>																																																																								
<b>12P</b>	0.75-14 NPTF ANSI B1.20.3	<b>12S</b>	-12 SAE ISO 11926; SAE 1926																																																																					
<b>R08 or I08</b>																																																																								
<b>16P</b>	1.00-11.5 NPTF ANSI B1.20.3	<b>16S</b>	-16 SAE ISO 11926; SAE 1926																																																																					
<b>R10 or I10</b>																																																																								
<b>20P</b>	1.25-11.5 NPTF ANSI B1.20.3	<b>20S</b>	-20 SAE ISO 11926; SAE 1926																																																																					
<b>24P</b>	1.50-11.5 NPTF ANSI B1.20.3	<b>24S</b>	-24 SAE ISO 11926; SAE 1926																																																																					