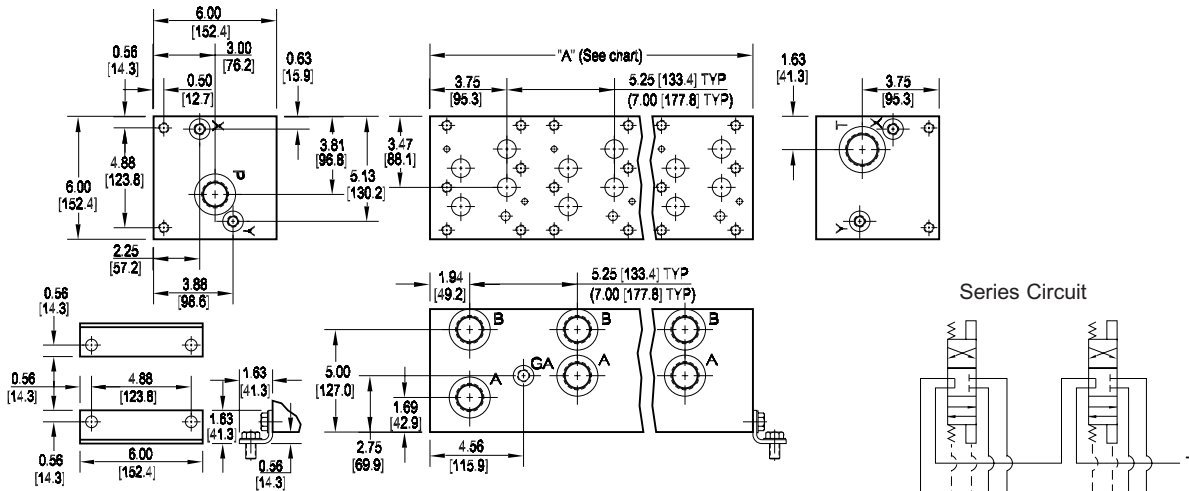


D08 Series Circuit Manifold



No. of stations	02	03
"A" length (code 5 spa.) inch [mm]	10.50 [266.7]	15.75 [400.1]
apx. weight alum lb [kg]	37 [17]	51 [23]
apx. weight iron lb [kg]	109 [49]	164 [74]
"A" length (code 7 spa.) inch [mm]	12.25 [311.2]	19.25 [489.0]
apx. weight alum lb [kg]	51 [23]	63 [29]
apx. weight iron lb [kg]	127 [58]	200 [91]

All mounting hardware is supplied.
See page 63 for itemized list.

Port code	Valve mtg.	Manifold mtg.
P, S	0.50-13 UNC x 1.19 [30] DP	0.50-13 UNC x 0.88 [22.3] DP
B, M, T	M12 ISO 6H x 1.19 [30] DP	M12 ISO 6H x 0.88 [22.3] DP

Specifications, descriptions, and dimensional data are subject to correction or change without notice or incurring obligation.
Download latest catalog page revisions at www.damanifolds.com.

Ordering Information

Material	Valve Pattern	Circuit	No. of Stations	Valve Spacing	Port Threads	Options																																																																																
<table border="1"> <thead> <tr> <th colspan="2">Material</th> </tr> </thead> <tbody> <tr> <td>A</td> <td>Aluminum - 6061-T6 3000† psi • 20.7 MPa</td> </tr> <tr> <td>D</td> <td>Ductile Iron - D4512 5000† psi • 34.5 MPa</td> </tr> </tbody> </table> <p>† Working pressure should be considered in accordance with ISO 4413 to determine appropriate material type.</p>	Material		A	Aluminum - 6061-T6 3000† psi • 20.7 MPa	D	Ductile Iron - D4512 5000† psi • 34.5 MPa	<table border="1"> <thead> <tr> <th colspan="2">Valve Pattern</th> </tr> </thead> <tbody> <tr> <td>D08</td> <td>ISO 4401-08-07 NFPA T3.5.1-D08 See Tech Information</td> </tr> </tbody> </table>	Valve Pattern		D08	ISO 4401-08-07 NFPA T3.5.1-D08 See Tech Information	<table border="1"> <thead> <tr> <th colspan="2">Circuit</th> </tr> </thead> <tbody> <tr> <td>S</td> <td>Series Circuit</td> </tr> </tbody> </table>	Circuit		S	Series Circuit	<table border="1"> <thead> <tr> <th colspan="2">No. of Stations</th> </tr> </thead> <tbody> <tr> <td colspan="2">Aluminum</td> </tr> <tr> <td>02...03</td> <td>Available with spacing code 5</td> </tr> <tr> <td>02...03</td> <td>Available with spacing code 7</td> </tr> <tr> <td colspan="2">Ductile Iron</td> </tr> <tr> <td>02...03</td> <td>Available with spacing code 5</td> </tr> <tr> <td>02...03</td> <td>Available with spacing code 7</td> </tr> </tbody> </table>	No. of Stations		Aluminum		02...03	Available with spacing code 5	02...03	Available with spacing code 7	Ductile Iron		02...03	Available with spacing code 5	02...03	Available with spacing code 7	<table border="1"> <thead> <tr> <th colspan="2">Valve Spacing</th> </tr> </thead> <tbody> <tr> <td>5</td> <td>5.25 inch 133.4 mm</td> </tr> <tr> <td>7</td> <td>7.00 inch 177.8 mm</td> </tr> </tbody> </table>	Valve Spacing		5	5.25 inch 133.4 mm	7	7.00 inch 177.8 mm	<table border="1"> <thead> <tr> <th colspan="6">Port Threads</th> </tr> <tr> <th></th> <th>P,A,B</th> <th>T</th> <th>X & Y</th> <th>GA</th> <th></th> </tr> </thead> <tbody> <tr> <td>P</td> <td>NPTF • ANSI B1.20.3</td> <td>1.00</td> <td>1.25</td> <td>0.38</td> <td>0.25</td> </tr> <tr> <td>S</td> <td>SAE • ISO 11926</td> <td>-16</td> <td>-20</td> <td>-6</td> <td>-6</td> </tr> <tr> <td>B</td> <td>BSPP • ISO 1179</td> <td>1.00</td> <td>1.25</td> <td>0.38</td> <td>none</td> </tr> <tr> <td>M</td> <td>ISO • ISO 6149</td> <td>M33</td> <td>M42</td> <td>M14</td> <td>none</td> </tr> <tr> <td>T</td> <td>BSPT • ISO 7</td> <td>1.00</td> <td>1.25</td> <td>0.38</td> <td>none</td> </tr> </tbody> </table>	Port Threads							P,A,B	T	X & Y	GA		P	NPTF • ANSI B1.20.3	1.00	1.25	0.38	0.25	S	SAE • ISO 11926	-16	-20	-6	-6	B	BSPP • ISO 1179	1.00	1.25	0.38	none	M	ISO • ISO 6149	M33	M42	M14	none	T	BSPT • ISO 7	1.00	1.25	0.38	none	<table border="1"> <thead> <tr> <th colspan="2">Options</th> </tr> </thead> <tbody> <tr> <td colspan="2">No options available.</td> </tr> </tbody> </table>	Options		No options available.	
Material																																																																																						
A	Aluminum - 6061-T6 3000† psi • 20.7 MPa																																																																																					
D	Ductile Iron - D4512 5000† psi • 34.5 MPa																																																																																					
Valve Pattern																																																																																						
D08	ISO 4401-08-07 NFPA T3.5.1-D08 See Tech Information																																																																																					
Circuit																																																																																						
S	Series Circuit																																																																																					
No. of Stations																																																																																						
Aluminum																																																																																						
02...03	Available with spacing code 5																																																																																					
02...03	Available with spacing code 7																																																																																					
Ductile Iron																																																																																						
02...03	Available with spacing code 5																																																																																					
02...03	Available with spacing code 7																																																																																					
Valve Spacing																																																																																						
5	5.25 inch 133.4 mm																																																																																					
7	7.00 inch 177.8 mm																																																																																					
Port Threads																																																																																						
	P,A,B	T	X & Y	GA																																																																																		
P	NPTF • ANSI B1.20.3	1.00	1.25	0.38	0.25																																																																																	
S	SAE • ISO 11926	-16	-20	-6	-6																																																																																	
B	BSPP • ISO 1179	1.00	1.25	0.38	none																																																																																	
M	ISO • ISO 6149	M33	M42	M14	none																																																																																	
T	BSPT • ISO 7	1.00	1.25	0.38	none																																																																																	
Options																																																																																						
No options available.																																																																																						

D10 Manifolds 