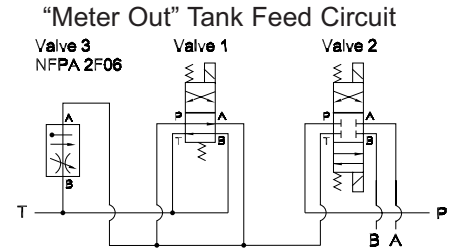
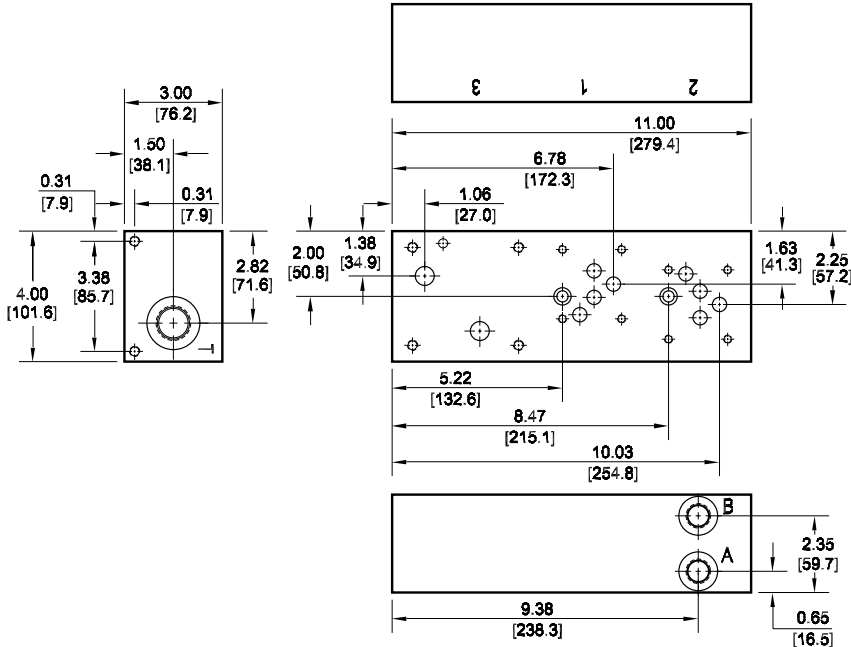


D05 Tank Line Feed Circuit Manifold

D05 Directional Valves 2F06 Flow Control Valve

Valve mtg: D05: UNC 0.25-20 x 0.50 DP
2F06: UNC 0.31-18 x 0.63 DP



Manifold Mounting:
Manifold bracket mounting kit is supplied. See page 62 for itemized mounting kit list.
Two SHCS clearance holes are provided for optional 5/16 (M8) SHCS mounting. Screws are user provided; minimum 3.00 in [75mm] long GR8 SHCS should be used.

Specifications, descriptions, and dimensional data are subject to correction or change without notice or incurring obligation. Download latest catalog page revisions at www.damanifolds.com.

Ordering Information

| Material | Valve Pattern | Circuit | Port Threads |
|----------|---------------|---------|--------------|
|----------|---------------|---------|--------------|

| Material | |
|----------|--|
| A | Aluminum - 6061-T6 3000† psi • 20.7 MPa |
| D | Ductile Iron - D4512 5000† psi • 34.5 MPa |

† Working pressure should be considered in accordance with ISO 4413 to determine appropriate material type.

| Valve Pattern | |
|--|--|
| D05 | ISO 4401-05-04 NFA T3.5.1-D05 See Tech Information |
| Flow Control Pattern (REF): 2F06 Pattern ISO 6263-06-05 NFA T3.5.1-2F06 | |

| Circuit | |
|-----------|---------------------------|
| TF | Tank Line Feed Circuit |

| Port Threads | | | |
|--------------|---------------------|-------|------|
| | P & T | A & B | |
| P | NPTF • ANSI B1.20.3 | 0.75 | 0.50 |
| S | SAE • ISO 11926 | -12 | -8 |