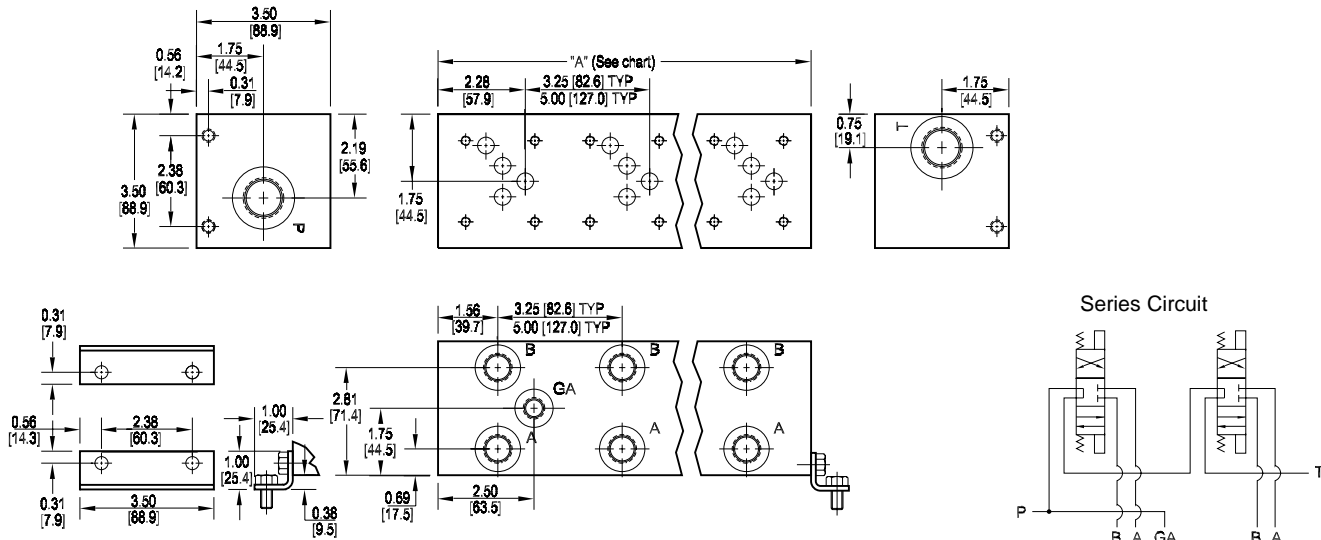


D05 Standard Flow Series Circuit Manifold



No. of stations	02	03	04
"A" length (code 3 spa.) inch [mm]	6.50 [165.1]	9.75 [247.7]	13.00 [330.2]
apx. weight alum lb [kg]	8 [4]	11 [5]	14 [7]
apx. weight iron lb [kg]	17 [8]	26 [12]	34 [15]
"A" length (code 5 spa.) inch [mm]	8.25 [209.6]	13.25 [336.6]	18.25 [463.6]
apx. weight alum lb [kg]	9 [4]	15 [7]	20 [9]
apx. weight iron lb [kg]	22 [10]	36 [16]	49 [22]

All mounting hardware is supplied.
See page 62 for itemized list.

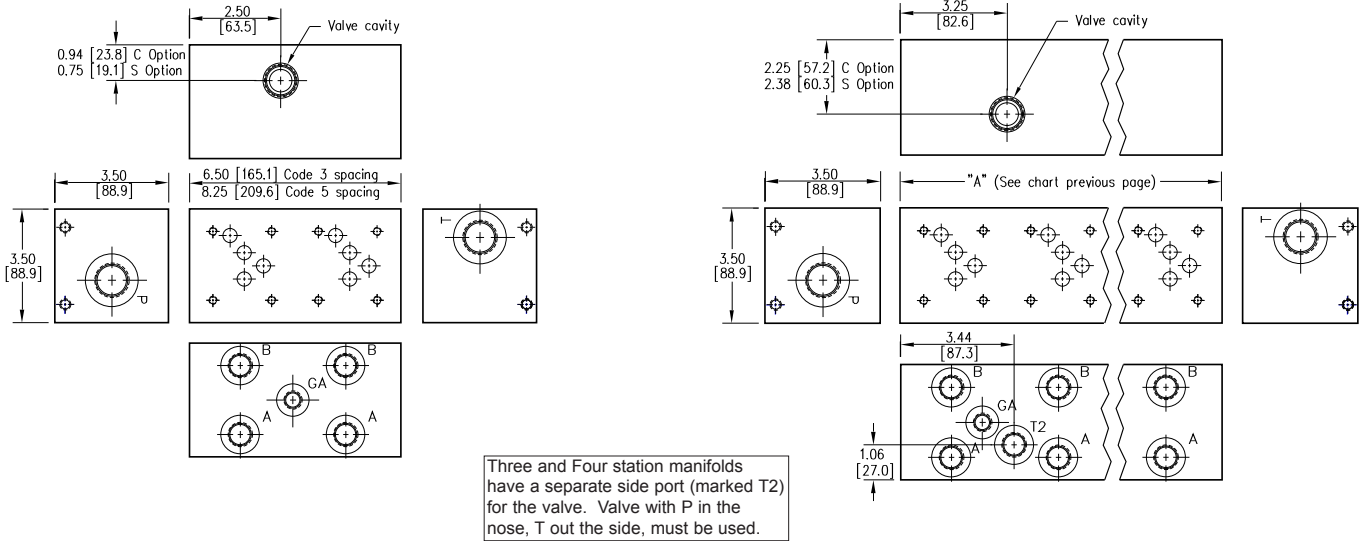
Port code	Valve mtg.	Manifold mtg.
P, S	0.25-20 UNC x 0.75 [19] DP	0.31-18 UNC x 0.44 [11.1] DP
B, M, T	M6 ISO 6H x 0.75 [19] DP	M8 ISO 6H x 0.44 [11.1] DP

Specifications, descriptions, and dimensional data are subject to correction or change without notice or incurring obligation.
Download latest catalog page revisions at www.damanifolds.com.

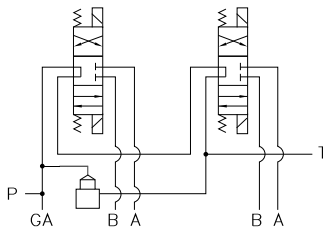
Ordering Information

Material	Valve Pattern	Circuit	No. of Stations	Valve Spacing	Port Threads	Options																																																																
<table border="1" style="width: 100%; border-collapse: collapse;"> <thead> <tr> <th colspan="2">Material</th> </tr> </thead> <tbody> <tr> <td style="text-align: center;">A</td> <td>Aluminum - 6061-T6 3000† psi • 20.7 MPa</td> </tr> <tr> <td style="text-align: center;">D</td> <td>Ductile Iron - D4512 5000† psi • 34.5 MPa</td> </tr> <tr> <td colspan="2">† Working pressure should be considered in accordance with ISO 4413 to determine appropriate material type.</td> </tr> </tbody> </table>	Material		A	Aluminum - 6061-T6 3000† psi • 20.7 MPa	D	Ductile Iron - D4512 5000† psi • 34.5 MPa	† Working pressure should be considered in accordance with ISO 4413 to determine appropriate material type.		<table border="1" style="width: 100%; border-collapse: collapse;"> <thead> <tr> <th colspan="2">Valve Pattern</th> </tr> </thead> <tbody> <tr> <td style="text-align: center;">D05</td> <td>ISO-4401-05-04 NFPA T3.5.1-D05 See Tech Information</td> </tr> </tbody> </table>	Valve Pattern		D05	ISO-4401-05-04 NFPA T3.5.1-D05 See Tech Information	<table border="1" style="width: 100%; border-collapse: collapse;"> <thead> <tr> <th colspan="2">Circuit</th> </tr> </thead> <tbody> <tr> <td style="text-align: center;">S</td> <td>Series Circuit Standard Flow</td> </tr> </tbody> </table>	Circuit		S	Series Circuit Standard Flow	<table border="1" style="width: 100%; border-collapse: collapse;"> <thead> <tr> <th colspan="2">No. of Stations</th> </tr> </thead> <tbody> <tr> <td colspan="2" style="text-align: center;">Aluminum</td> </tr> <tr> <td style="text-align: center;">02...04</td> <td>Available with spacing code 3</td> </tr> <tr> <td style="text-align: center;">02...04</td> <td>Available with spacing code 5</td> </tr> <tr> <td colspan="2" style="text-align: center;">Ductile Iron</td> </tr> <tr> <td style="text-align: center;">02...04</td> <td>Available with spacing code 3</td> </tr> <tr> <td style="text-align: center;">02...04</td> <td>Available with spacing code 5</td> </tr> </tbody> </table>	No. of Stations		Aluminum		02...04	Available with spacing code 3	02...04	Available with spacing code 5	Ductile Iron		02...04	Available with spacing code 3	02...04	Available with spacing code 5	<table border="1" style="width: 100%; border-collapse: collapse;"> <thead> <tr> <th colspan="2">Valve Spacing</th> </tr> </thead> <tbody> <tr> <td style="text-align: center;">3</td> <td>3.25 inch 82.6 mm</td> </tr> <tr> <td style="text-align: center;">5</td> <td>5.00 inch 127.0 mm</td> </tr> </tbody> </table>	Valve Spacing		3	3.25 inch 82.6 mm	5	5.00 inch 127.0 mm	<table border="1" style="width: 100%; border-collapse: collapse;"> <thead> <tr> <th colspan="4">Port Threads</th> </tr> </thead> <tbody> <tr> <td style="text-align: center;">P</td> <td>NPTF • ANSI B1.20.3</td> <td style="text-align: center;">P & T</td> <td style="text-align: center;">A & B</td> </tr> <tr> <td style="text-align: center;">S</td> <td>SAE • ISO 11926</td> <td style="text-align: center;">-12</td> <td style="text-align: center;">-8</td> </tr> <tr> <td style="text-align: center;">B</td> <td>BSPP • ISO 1179</td> <td style="text-align: center;">0.75</td> <td style="text-align: center;">0.50</td> </tr> <tr> <td style="text-align: center;">M</td> <td>ISO • ISO 6149</td> <td style="text-align: center;">M27</td> <td style="text-align: center;">M18</td> </tr> <tr> <td style="text-align: center;">T</td> <td>BSPT • ISO 7</td> <td style="text-align: center;">0.75</td> <td style="text-align: center;">0.50</td> </tr> </tbody> </table>	Port Threads				P	NPTF • ANSI B1.20.3	P & T	A & B	S	SAE • ISO 11926	-12	-8	B	BSPP • ISO 1179	0.75	0.50	M	ISO • ISO 6149	M27	M18	T	BSPT • ISO 7	0.75	0.50	<table border="1" style="width: 100%; border-collapse: collapse;"> <thead> <tr> <th colspan="2">Options</th> </tr> </thead> <tbody> <tr> <td colspan="2">See next page for available options and ordering codes.</td> </tr> </tbody> </table>	Options		See next page for available options and ordering codes.	
Material																																																																						
A	Aluminum - 6061-T6 3000† psi • 20.7 MPa																																																																					
D	Ductile Iron - D4512 5000† psi • 34.5 MPa																																																																					
† Working pressure should be considered in accordance with ISO 4413 to determine appropriate material type.																																																																						
Valve Pattern																																																																						
D05	ISO-4401-05-04 NFPA T3.5.1-D05 See Tech Information																																																																					
Circuit																																																																						
S	Series Circuit Standard Flow																																																																					
No. of Stations																																																																						
Aluminum																																																																						
02...04	Available with spacing code 3																																																																					
02...04	Available with spacing code 5																																																																					
Ductile Iron																																																																						
02...04	Available with spacing code 3																																																																					
02...04	Available with spacing code 5																																																																					
Valve Spacing																																																																						
3	3.25 inch 82.6 mm																																																																					
5	5.00 inch 127.0 mm																																																																					
Port Threads																																																																						
P	NPTF • ANSI B1.20.3	P & T	A & B																																																																			
S	SAE • ISO 11926	-12	-8																																																																			
B	BSPP • ISO 1179	0.75	0.50																																																																			
M	ISO • ISO 6149	M27	M18																																																																			
T	BSPT • ISO 7	0.75	0.50																																																																			
Options																																																																						
See next page for available options and ordering codes.																																																																						

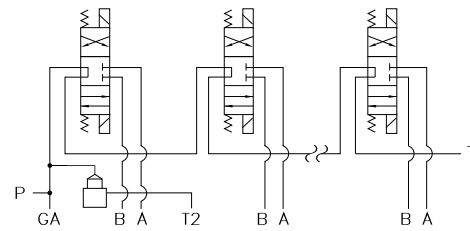
Options - D05 Standard Flow Series Manifold



Series Circuit with Cavity - (2) station



Series Circuit with Cavity - (3) or (4) station



Ordering Information



Cavity	
Omit if cavity not required.	
C	Common cavity: 2-station has solenoid clearance. 3 & 4 station does not have solenoid clearance. C-10-2 (P in nose)
S	Sun Cavity: T-3A (P in nose) See Tech Info for valves.

Port Code (ref.)	T2 Port Size
3 and 4 Station Manifold	
P	0.50 NPTF • ANSI B1.20.3
S	-8 SAE • ISO 11926
B	0.50 BSPP • ISO 1179
M	M18 ISO • ISO 6149
T	0.50 BSPT • ISO 7