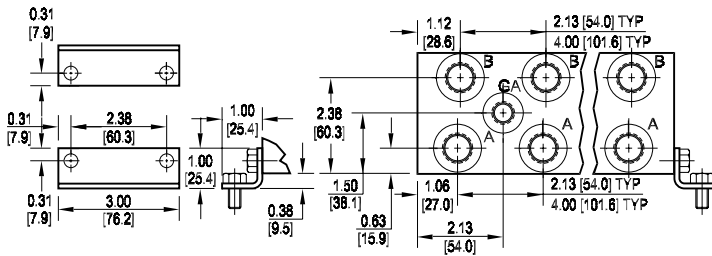
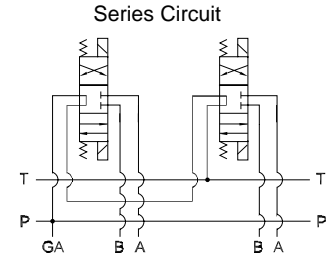
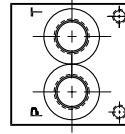
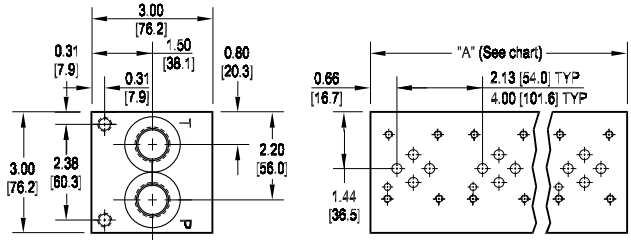


# D03 Series Circuit Manifold



All mounting hardware is supplied.  
See page 62 for itemized list.

No. of stations	02	03	04	05	06	07	08
"A" length (code 2 spa.) inch [mm]	4.25 [108.0]	6.38 [162.1]	8.50 [215.9]	10.63 [270.0]	12.75 [323.9]	14.88 [378.0]	17.00 [431.8]
apx. weight alum lb [kg]	4 [2]	6 [3]	8 [4]	9 [4]	11 [5]	12 [5]	14 [6]
apx. weight iron lb [kg]	9 [4]	13 [6]	17 [8]	23 [10]	26 [12]	--	--
"A" length (code 4 spa.) inch [mm]	6.13 [155.7]	10.13 [257.3]	14.13 [358.9]				
apx. weight alum lb [kg]	6 [3]	9 [4]	12 [5]				
apx. weight iron lb [kg]	12 [5]	20 [9]	28 [13]				

Port code	Valve mtg.	Manifold mtg.
P, S	#10-24 UNC x 0.63 [16] DP	0.31-18 UNC x 0.44 [11.1] DP
B, M, T	M5 ISO 6H x 0.63 [16] DP	M8 ISO 6H x 0.44 [11.1] DP

**Note:** Both Daman's parallel and series D03 manifolds have pressure and tank lines that run the length of the manifold. Consequently it is commonly assumed that an error was made by marking a parallel manifold incorrectly as a series. Upon closer inspection it can be seen that the valve patterns are indeed connected in series.

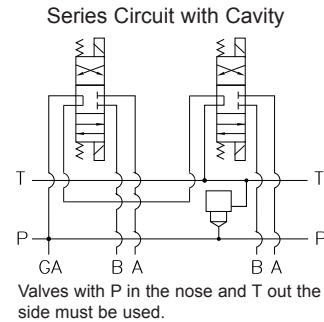
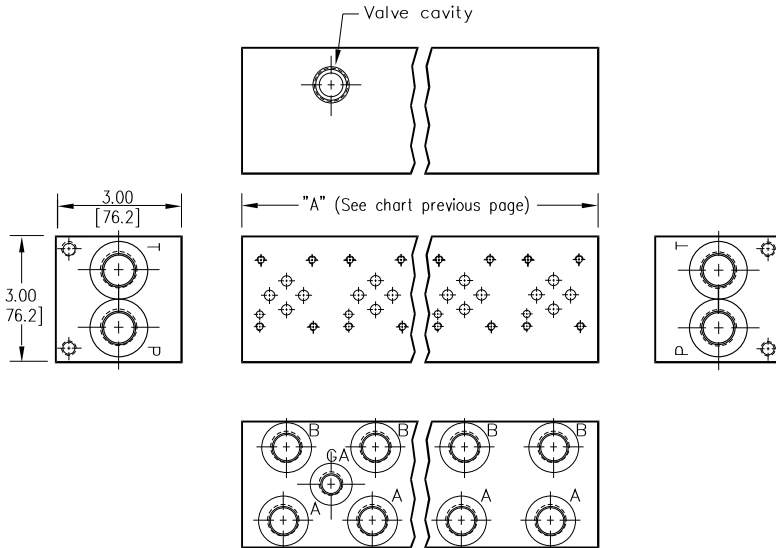
Specifications, descriptions, and dimensional data are subject to correction or change without notice or incurring obligation.  
Download latest catalog page revisions at [www.damanifolds.com](http://www.damanifolds.com).

## Ordering Information

Material	Valve Pattern	Circuit	No. of Stations	Valve Spacing	Port Threads	Options																																																																									
<table border="1"> <thead> <tr> <th colspan="2">Material</th> </tr> </thead> <tbody> <tr> <td><b>A</b></td> <td>Aluminum - 6061-T6 3000† psi • 20.7 MPa</td> </tr> <tr> <td><b>D</b></td> <td>Ductile Iron - D4512 5000† psi • 34.5 MPa</td> </tr> <tr> <td colspan="2">† Working pressure should be considered in accordance with ISO 4413 to determine appropriate material type.</td> </tr> </tbody> </table>	Material		<b>A</b>	Aluminum - 6061-T6 3000† psi • 20.7 MPa	<b>D</b>	Ductile Iron - D4512 5000† psi • 34.5 MPa	† Working pressure should be considered in accordance with ISO 4413 to determine appropriate material type.		<table border="1"> <thead> <tr> <th colspan="2">Valve Pattern</th> </tr> </thead> <tbody> <tr> <td><b>D03</b></td> <td>ISO 4401-03-02 NFPA T3.5.1-D03 See Tech Information</td> </tr> </tbody> </table>	Valve Pattern		<b>D03</b>	ISO 4401-03-02 NFPA T3.5.1-D03 See Tech Information	<table border="1"> <thead> <tr> <th colspan="2">Circuit</th> </tr> </thead> <tbody> <tr> <td><b>S</b></td> <td>Series Circuit</td> </tr> </tbody> </table>	Circuit		<b>S</b>	Series Circuit	<table border="1"> <thead> <tr> <th colspan="2">No. of Stations</th> </tr> </thead> <tbody> <tr> <td colspan="2">Aluminum</td> </tr> <tr> <td><b>02...08</b></td> <td>Available with spacing code 2</td> </tr> <tr> <td><b>02...04</b></td> <td>Available with spacing code 4</td> </tr> <tr> <td colspan="2">Ductile Iron</td> </tr> <tr> <td><b>02...06</b></td> <td>Available with spacing code 2</td> </tr> <tr> <td><b>02...04</b></td> <td>Available with spacing code 4</td> </tr> </tbody> </table>	No. of Stations		Aluminum		<b>02...08</b>	Available with spacing code 2	<b>02...04</b>	Available with spacing code 4	Ductile Iron		<b>02...06</b>	Available with spacing code 2	<b>02...04</b>	Available with spacing code 4	<table border="1"> <thead> <tr> <th colspan="2">Valve Spacing</th> </tr> </thead> <tbody> <tr> <td><b>2</b></td> <td>2.13 inch 38.1 mm</td> </tr> <tr> <td><b>4</b></td> <td>4.00 inch 101.6 mm</td> </tr> </tbody> </table>	Valve Spacing		<b>2</b>	2.13 inch 38.1 mm	<b>4</b>	4.00 inch 101.6 mm	<table border="1"> <thead> <tr> <th colspan="4">Port Threads</th> </tr> </thead> <tbody> <tr> <th>P</th> <th>P &amp; T</th> <th>A &amp; B</th> <th>GA</th> </tr> <tr> <td><b>P</b></td> <td>NPTF • ANSI B1.20.3</td> <td>0.50</td> <td>0.38</td> <td>0.25</td> </tr> <tr> <td><b>S</b></td> <td>SAE • ISO 11926</td> <td>-10</td> <td>-8</td> <td>-6</td> </tr> <tr> <td><b>B</b></td> <td>BSPP • ISO 1179</td> <td>0.50</td> <td>0.38</td> <td>none</td> </tr> <tr> <td><b>M</b></td> <td>ISO • ISO 6149</td> <td>M22</td> <td>M18</td> <td>none</td> </tr> <tr> <td><b>T</b></td> <td>BSPT • ISO 7</td> <td>0.50</td> <td>0.38</td> <td>none</td> </tr> </tbody> </table>	Port Threads				P	P & T	A & B	GA	<b>P</b>	NPTF • ANSI B1.20.3	0.50	0.38	0.25	<b>S</b>	SAE • ISO 11926	-10	-8	-6	<b>B</b>	BSPP • ISO 1179	0.50	0.38	none	<b>M</b>	ISO • ISO 6149	M22	M18	none	<b>T</b>	BSPT • ISO 7	0.50	0.38	none	<table border="1"> <thead> <tr> <th colspan="2">Options</th> </tr> </thead> <tbody> <tr> <td colspan="2">See next page for available options and ordering codes.</td> </tr> </tbody> </table>	Options		See next page for available options and ordering codes.	
Material																																																																															
<b>A</b>	Aluminum - 6061-T6 3000† psi • 20.7 MPa																																																																														
<b>D</b>	Ductile Iron - D4512 5000† psi • 34.5 MPa																																																																														
† Working pressure should be considered in accordance with ISO 4413 to determine appropriate material type.																																																																															
Valve Pattern																																																																															
<b>D03</b>	ISO 4401-03-02 NFPA T3.5.1-D03 See Tech Information																																																																														
Circuit																																																																															
<b>S</b>	Series Circuit																																																																														
No. of Stations																																																																															
Aluminum																																																																															
<b>02...08</b>	Available with spacing code 2																																																																														
<b>02...04</b>	Available with spacing code 4																																																																														
Ductile Iron																																																																															
<b>02...06</b>	Available with spacing code 2																																																																														
<b>02...04</b>	Available with spacing code 4																																																																														
Valve Spacing																																																																															
<b>2</b>	2.13 inch 38.1 mm																																																																														
<b>4</b>	4.00 inch 101.6 mm																																																																														
Port Threads																																																																															
P	P & T	A & B	GA																																																																												
<b>P</b>	NPTF • ANSI B1.20.3	0.50	0.38	0.25																																																																											
<b>S</b>	SAE • ISO 11926	-10	-8	-6																																																																											
<b>B</b>	BSPP • ISO 1179	0.50	0.38	none																																																																											
<b>M</b>	ISO • ISO 6149	M22	M18	none																																																																											
<b>T</b>	BSPT • ISO 7	0.50	0.38	none																																																																											
Options																																																																															
See next page for available options and ordering codes.																																																																															

# Options - D03 Series Manifold

Contact Daman or consult web  
CADalog for cavity locations if critical.



## Ordering Information



Cavity	
Omit if cavity not required	
<b>C</b>	Common cavity: No solenoid clearance. C-10-2 (P in nose)
<b>S</b>	Sun Cavity: T-10A (P in nose) See Tech Info for valves.