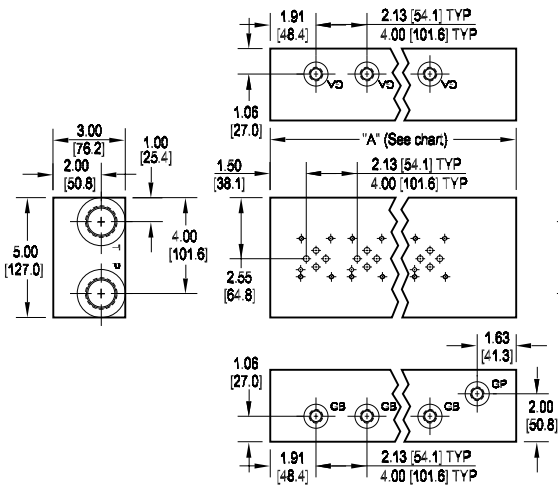
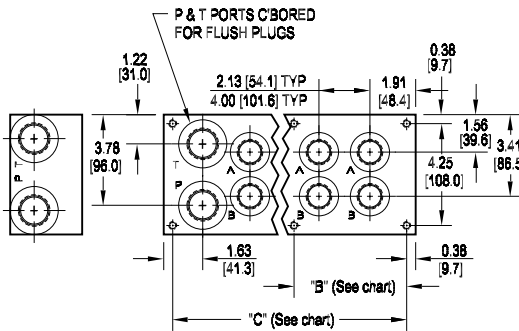


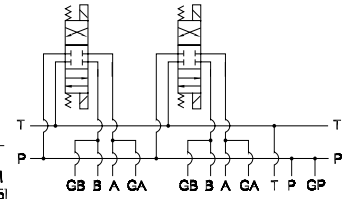
D03 High Flow Bottom Ported Manifold



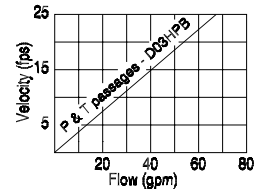
Mounting hardware is NOT supplied.



Parallel Circuit



Flow Curve



Port code	Valve mtg.	Manifold mtg.
P, S	#10-24 UNC x 0.56 [14.3] DP	0.38-16 UNC x 1.00 [25.4] DP
B, M, T	M5 ISO 6H x 0.56 [14.3] DP	M10 ISO 6H x 1.00 [25.4] DP

No. of stations	01	02	03	04	05	06	07	08	09	10	No. of stations	02	03	04	05	06
"A" length (code 2 spa.) inch [mm]	5.50 [139.7]	7.63 [193.7]	9.75 [247.7]	11.88 [301.6]	14.00 [355.6]	16.13 [409.6]	18.25 [463.6]	20.38 [517.5]	22.50 [571.5]	24.63 [625.5]	"A" length (code 4 spa.) inch [mm]	9.50 [241.3]	13.50 [342.9]	17.50 [444.5]	21.50 [546.1]	25.50 [647.7]
"B" dim (code 2 spa.) inch [mm]	--	--	--	--	--	--	8.97 [227.8]	11.09 [281.8]	11.09 [281.8]	11.09 [281.8]	"B" dim (code 4 spa.) inch [mm]	--	--	--	11.53 [292.9]	11.53 [292.9]
"C" dim (code 2 spa.) inch [mm]	4.75 [120.7]	6.88 [174.6]	9.00 [228.6]	11.13 [282.6]	13.25 [336.6]	15.38 [390.5]	17.50 [444.5]	19.63 [498.5]	21.75 [552.5]	23.88 [606.4]	"C" dim (code 4 spa.) inch [mm]	8.75 [222.3]	12.75 [323.9]	16.75 [425.5]	20.75 [527.1]	24.75 [628.7]
apx. weight alum lb [kg]	8 [4]	11 [5]	15 [7]	18 [8]	21 [10]	24 [11]	27 [12]	31 [14]	34 [15]	37 [17]	apx. weight alum lb [kg]	14 [6]	20 [9]	26 [12]	32 [15]	38 [17]
apx. weight iron lb [kg]	21 [10]	30 [13]	38 [17]	46 [21]	55 [25]	63 [29]	71 [32]	79 [36]	88 [40]	96 [44]	apx. weight iron lb [kg]	37 [17]	53 [24]	68 [31]	84 [38]	99 [45]

Specifications, descriptions, and dimensional data are subject to correction or change without notice or incurring obligation. Download latest catalog page revisions at www.damanifolds.com.

Ordering Information

Material	Valve Pattern	Circuit	No. of Stations	Valve Spacing	Port Threads																																																																			
<table border="1" style="width: 100%;"> <thead> <tr> <th colspan="2">Material</th> </tr> </thead> <tbody> <tr> <td>A</td> <td>Aluminum - 6061-T6 3000† psi • 20.7 MPa</td> </tr> <tr> <td>D</td> <td>Ductile Iron - D4512 5000† psi • 34.5 MPa</td> </tr> </tbody> </table> <p>† Working pressure should be considered in accordance with ISO 4413 to determine appropriate material type.</p>	Material		A	Aluminum - 6061-T6 3000† psi • 20.7 MPa	D	Ductile Iron - D4512 5000† psi • 34.5 MPa	<table border="1" style="width: 100%;"> <thead> <tr> <th colspan="2">Valve Pattern</th> </tr> </thead> <tbody> <tr> <td>D03</td> <td>ISO 4401-03-02 NFPA T3.5.1-D03 See Tech Information</td> </tr> </tbody> </table>	Valve Pattern		D03	ISO 4401-03-02 NFPA T3.5.1-D03 See Tech Information	<table border="1" style="width: 100%;"> <thead> <tr> <th colspan="2">Circuit</th> </tr> </thead> <tbody> <tr> <td>HPB</td> <td>Parallel Circuit High Flow Bottom Ported</td> </tr> </tbody> </table>	Circuit		HPB	Parallel Circuit High Flow Bottom Ported	<table border="1" style="width: 100%;"> <thead> <tr> <th colspan="2">No. of Stations</th> </tr> </thead> <tbody> <tr> <td colspan="2">Aluminum</td> </tr> <tr> <td>01...10</td> <td>Available with spacing code 2</td> </tr> <tr> <td>02...06</td> <td>Available with spacing code 4</td> </tr> <tr> <td colspan="2">Ductile Iron</td> </tr> <tr> <td>01...10</td> <td>Available with spacing code 2</td> </tr> <tr> <td>02...06</td> <td>Available with spacing code 4</td> </tr> </tbody> </table>	No. of Stations		Aluminum		01...10	Available with spacing code 2	02...06	Available with spacing code 4	Ductile Iron		01...10	Available with spacing code 2	02...06	Available with spacing code 4	<table border="1" style="width: 100%;"> <thead> <tr> <th colspan="2">Valve Spacing</th> </tr> </thead> <tbody> <tr> <td>2</td> <td>2.13 inch 54.0 mm</td> </tr> <tr> <td>4</td> <td>4.00 inch 101.6 mm</td> </tr> </tbody> </table>	Valve Spacing		2	2.13 inch 54.0 mm	4	4.00 inch 101.6 mm	<table border="1" style="width: 100%;"> <thead> <tr> <th colspan="4">Port Threads</th> </tr> <tr> <th></th> <th>P & T</th> <th>A & B</th> <th>G*</th> </tr> </thead> <tbody> <tr> <td>P</td> <td>NPTF • ANSI B1.20.3</td> <td>1.00</td> <td>0.75</td> <td>0.25</td> </tr> <tr> <td>S</td> <td>SAE • ISO 11926</td> <td>-16</td> <td>-12</td> <td>-4</td> </tr> <tr> <td>B</td> <td>BSPP • ISO 1179</td> <td>1.00</td> <td>0.75</td> <td>0.25</td> </tr> <tr> <td>M</td> <td>ISO • ISO 6149</td> <td>M33</td> <td>M27</td> <td>M10</td> </tr> <tr> <td>T</td> <td>BSPT • ISO 7</td> <td>1.00</td> <td>0.75</td> <td>0.25</td> </tr> </tbody> </table>	Port Threads					P & T	A & B	G*	P	NPTF • ANSI B1.20.3	1.00	0.75	0.25	S	SAE • ISO 11926	-16	-12	-4	B	BSPP • ISO 1179	1.00	0.75	0.25	M	ISO • ISO 6149	M33	M27	M10	T	BSPT • ISO 7	1.00	0.75	0.25
Material																																																																								
A	Aluminum - 6061-T6 3000† psi • 20.7 MPa																																																																							
D	Ductile Iron - D4512 5000† psi • 34.5 MPa																																																																							
Valve Pattern																																																																								
D03	ISO 4401-03-02 NFPA T3.5.1-D03 See Tech Information																																																																							
Circuit																																																																								
HPB	Parallel Circuit High Flow Bottom Ported																																																																							
No. of Stations																																																																								
Aluminum																																																																								
01...10	Available with spacing code 2																																																																							
02...06	Available with spacing code 4																																																																							
Ductile Iron																																																																								
01...10	Available with spacing code 2																																																																							
02...06	Available with spacing code 4																																																																							
Valve Spacing																																																																								
2	2.13 inch 54.0 mm																																																																							
4	4.00 inch 101.6 mm																																																																							
Port Threads																																																																								
	P & T	A & B	G*																																																																					
P	NPTF • ANSI B1.20.3	1.00	0.75	0.25																																																																				
S	SAE • ISO 11926	-16	-12	-4																																																																				
B	BSPP • ISO 1179	1.00	0.75	0.25																																																																				
M	ISO • ISO 6149	M33	M27	M10																																																																				
T	BSPT • ISO 7	1.00	0.75	0.25																																																																				

D03 Series Circuit Manifolds 