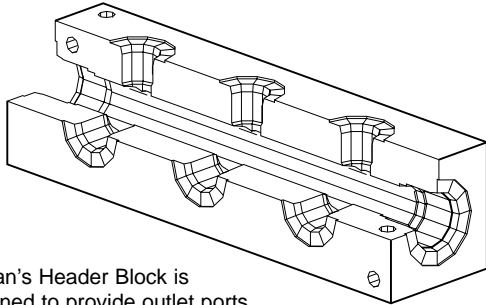
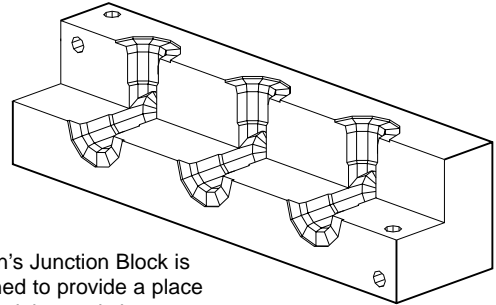


Header Block



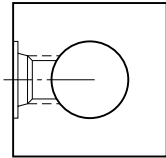
Daman's Header Block is designed to provide outlet ports that are common to one header (thru) port. The header port is always one size larger than the outlet ports.

Junction Block

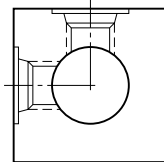


Daman's Junction Block is designed to provide a place to join piping and change direction or split / combine with other lines.

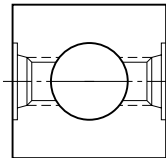
Available Header Block Configurations



0° design
See pages 180-181

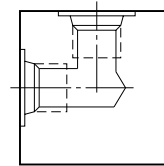


90° design
See pages 182-183

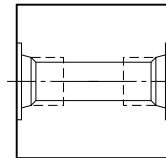


180° design
See pages 184-185

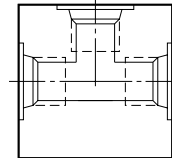
Available Junction Block Configurations



90° design
See pages 186-187



180° design
See pages 188-189



270° design
See pages 190-191

Header Block Mounting Hardware	Port Size	Mounting bolts
	01P	(2) or (3) UNC #10-24 x 1.50 long SHCS
02P	(2) or (3) UNC 0.25-20 x 2.00 long SHCS	
04*, 06S	(2) or (3) UNC 0.25-20 x 2.25 long SHCS	
06P, 08P	(2) or (3) UNC 0.25-20 x 2.50 long SHCS	
08S	(2) or (3) UNC 0.25-20 x 2.75 long SHCS	
12*	(2) or (3) UNC 0.31-18 x 3.00 long SHCS	
16*	(2) or (3) UNC 0.38-16 x 3.50 long SHCS	
20*	(2) or (3) UNC 0.50-13 x 4.50 long SHCS	
24P	(2) or (3) UNC 0.50-13 x 5.00 long SHCS	
24S	(2) or (3) UNC 0.50-13 x 5.50 long SHCS	

Junction Block Mounting Hardware	Port Size	Mounting bolts
	04*	(2) or (3) UNC 0.25-20 x 2.25 long SHCS
06*	(2) or (3) UNC 0.25-20 x 2.25 long SHCS	
08*	(2) or (3) UNC 0.25-20 x 2.50 long SHCS	
12*	(2) or (3) UNC 0.31-18 x 3.00 long SHCS	
16*	(2) or (3) UNC 0.38-16 x 3.50 long SHCS	
20*	(2) or (3) UNC 0.50-13 x 4.50 long SHCS	
24*	(2) or (3) UNC 0.50-13 x 5.00 long SHCS	